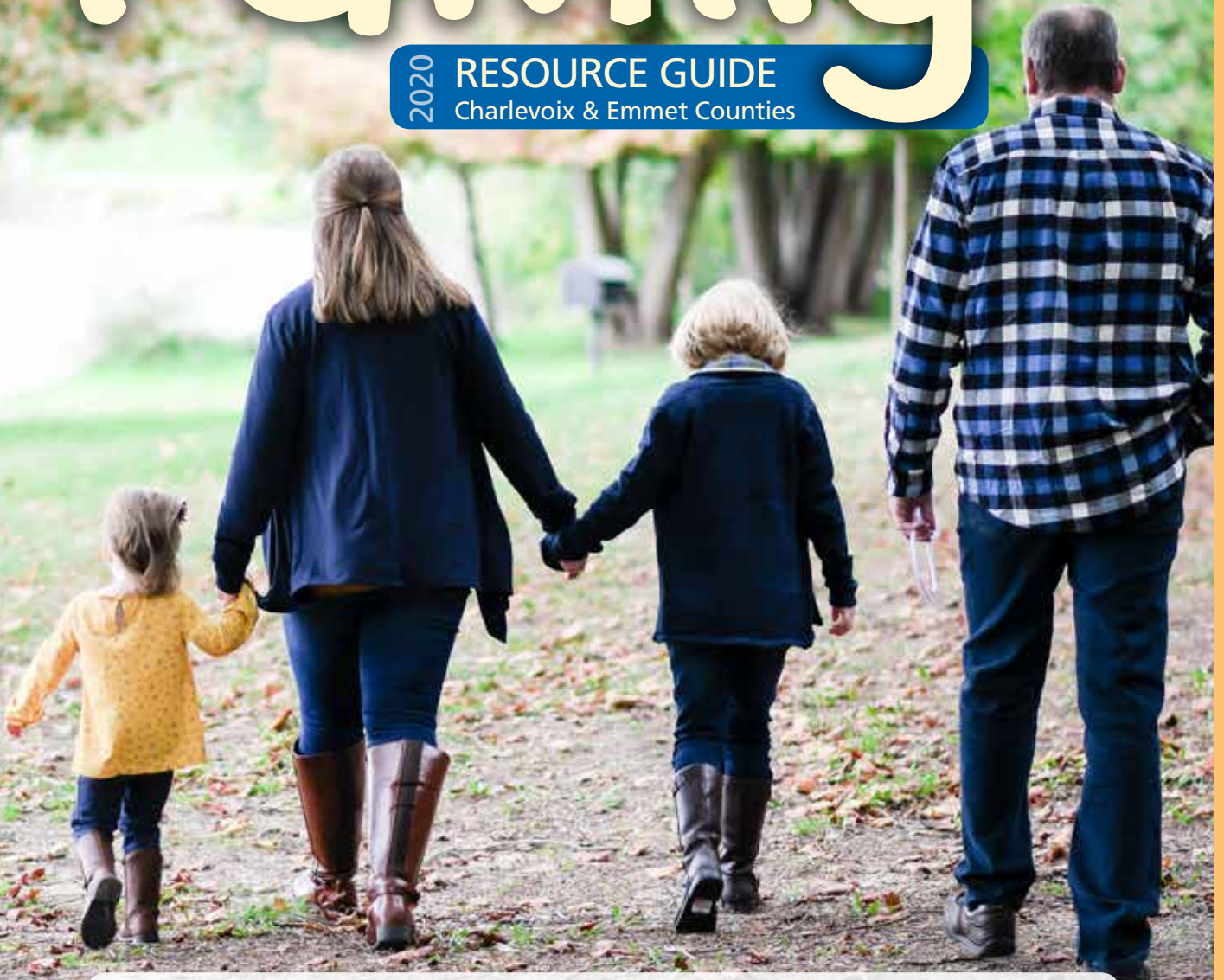


# Family

2020

RESOURCE GUIDE  
Charlevoix & Emmet Counties



Meeting your needs through community  
support & resources makes your family strong!  
P.O. Box 2401, Petoskey, MI 49770  
[www.ceuw.org](http://www.ceuw.org) · (231) 487-1006

This publication is brought to you by Char-Em United Way

United  
Way



Char-Em United Way

# CONTENTS

- 28 Aging Services
- 6 Counseling & Crisis Services
- 29 Disability Services
- 8 Education & Parenting Services
- 20 Employment Services
- 14 Food Assistance
- 20 Government & Legal Services
- 18 Health Services
- 24 Housing & Utility Assistance
- 25 Native American Services
- 27 Philanthropy & Volunteerism
- 26 Support Groups
- 30 Transportation Services
- 30 Veteran Services



Cover photo courtesy of A13 Studios

**Charlevoix**  
PUBLIC LIBRARY  
*Where your imagination takes flight*

Monday-Thursday, 10am-8pm  
Friday & Saturday, 10am-5pm  
Sunday, 1pm-5pm

220 W. Clinton Street  
Charlevoix • 574-2651  
[www.charlevoixlibrary.org](http://www.charlevoixlibrary.org)

PH-70792-1

A photograph of the interior of the Charlevoix Public Library. It features a large, circular skylight in the ceiling and a spiral pattern on the floor. The space is bright and modern.

EMMET COUNTY PUBLIC BUS SERVICE

EMGORIDE.COM

# EMGO

CALL EMGO when you need a ride to or from work, school, appointments, or to most areas of Emmet County. Full rate \$4 for rides under 5 miles. Over age 60, rides for half off. Transport your bike for 50 cents more.

## CALL 866-731-1204

(231) 597-9262 or (231) 597-0175

*Service operates Monday-Friday, 6:00 a.m. to 5:30 p.m.*

EARN A FREE RIDE WHEN YOU BUY AND USE UP A \$20 PUNCH CARD!



# Providing real solutions for individuals & families.

**CALL US  
TODAY  
TO GET  
STARTED  
ON THE  
RIGHT PATH.**



**Great Lakes  
Psychiatric**  
Counseling & Outpatient  
Psychiatric Services  
**231-487-6076**

**IN NETWORK PROVIDER FOR:**  
BlueCross/BlueShield, BCN Priority Health, McLaren  
Commercial, Tricare & Medicare Patients

## **SERVICES:**

- Individual, Family, Group Therapy, & Marriage Counseling
- Substance Abuse & Mental Health Evaluations
- Medication Management For Adolescents and Adults
- Genetic Testing for Medication Monitoring
- Specializing in Emotional/Development Disorders for Adolescents
- Crisis Intervention
- Partnering with primary care provider to optimize medication therapy
- DBT-CBT
- IVA-2 testing / ADHD testing
- Play therapy / EMDR therapy

## **PSYCHIATRISTS**

**Kevin Batterbee D.O.**

## **MENTAL HEALTH NURSE PRACTITIONERS**

**Anthony DiLoreto DNP-BC**

**Geraldine Dorris PMHNP-BC**

**Natalie Ducastel PMHNP-BC**

## **THERAPY**

**Derek Johnson LMSW**

**Ginger Fricke LMSW**

**Kristen Herriman LPC**

## **NURSING**

**Moriah Schultz RN, Practice Manager**

## **For Referrals:**

Call **(231) 487-6076**

e-mail **mschultz@greatlakesttc.com**

or visit **www.greatlakesttc.com**

(Flexible scheduling – offering nights  
& weekend appointments)



2206 Mitchell Park Drive, Suite 10  
Petoskey, MI 49770

Located Near Intersection of Division and Mitchell Street

# INTRODUCTION

Submitted by Rebeca Otto,  
Community Engagement Director,  
Char-Em United Way

**N**avigating through life can be filled with challenges. But you don't need to do everything alone.

Our community has many agencies dedicated to meeting your needs. Inside this Family Resource Guide, you will find those agencies listed generally by category. At the other end of those phone numbers and emails are individuals committed to being of service to you and your family. In addition to this guide, our community has another resource in 211, a free information and referral line that is available by phone, chat, text or web. Trained information and referral specialists can walk you through resources for which you may qualify, what documentation may be required by that agency and how to contact them.

A resilient community supports all of its citizens and makes sure that no one is alone when they are struggling. Ensuring that everyone can access those supports, build resilience and connect helps protect our most vulnerable populations. Our goal at Char-Em United Way is to ensure that every person in our community is able to find the resources to help them when they find themselves in a time of need.

**The next Family Resource Guide will be released in 2021. If you are a human service, nonprofit or governmental organization and would like to be listed in the next guide, please send your information to: [info@ceuw.org](mailto:info@ceuw.org).**

## Who we are... our initiatives... where we are... & why it matters!

### WHO WE ARE:

Char-Em United Way improves lives in lasting and impactful ways by mobilizing the caring power of Charlevoix and Emmet Counties. We do this by focusing on providing support to those living below the ALICE threshold. ALICE stands for Asset Limited, Income Constrained and Employed - the working poor who are struggling to make ends meet, even after often working more than one job. Our initiatives support ALICE and our program grants align with this purpose as well. Our vision is to unite the people and resources of Charlevoix and Emmet Counties to build strong communities where everyone achieves their fullest potential.

### OUR INITIATIVES:

The Business Resource Network (BRN) provides a job coach to participating organizations. This job coach helps employees overcome obstacles that keep them from being successful professionally and personally which in turn helps the employers with retention costs.

Dolly Parton's Imagination Library mails a book per month directly to kiddos ages of birth to 5 years old in Charlevoix and Emmet Counties. On average there are 1500-1600 kids registered! This program helps to promote childhood literacy in our community by giving children an at-home library that creates excitement about literacy and reading. Since the inception of the program, we have mailed over 115,000 books.

211 is a free service that is available to everyone. The 211 database is continuously updated with nonprofit, religious and service based organizations who offer free or low-cost services/goods in our community. This means all available resources are found in ONE PLACE, just a phone call, text or website click away. The Information & Referral Specialist is trained to ask questions

that help paint the big picture of the caller's needs, which may have initially been a request for food help. After the call, this community member could have resources for not only food, but also help with transportation, childcare, mental health services, and home or utility assistance. Most services listed in this Resource Guide are found by calling 211.

### WHERE WE ARE:

Char-Em United Way Initiatives support individuals and families in Charlevoix and Emmet Counties. Our physical office is in Petoskey, however our team is mobile and travels as needed to do the good work in our community.

### WHY IT MATTERS:

We help build strong communities by uniting the people and resources in our communities. We are a small but mighty United Way with two full-time staff members and a Board of Directors. The Board of Directors believes in keeping our donations local, so their contributions are designated to cover the United Way Worldwide and Michigan United Way dues so that all other donations remain 100% local, supporting the initiatives that directly impact our community. We fight for the Health, Education and Financial Stability of every person in our community and we are able to do that because of the Power of U! Where there is need, U are there. Where there is despair, U bring hope. That's the Power of U, the Power of United Way and people like you to be everyday heroes in our community. Because of you, United Way is the voice for the unheard. A champion for the underserved. Unleash the Power of U.

### CONTACT:

**Rebeca Otto,**  
Community Engagement Director  
Email: [Community@ceuw.org](mailto:Community@ceuw.org)  
Phone: 231-487-1006  
Website: [www.ceuw.org](http://www.ceuw.org)

# Give your child a healthy start!

We offer free newborn home visits, hearing and vision screenings, support for pregnant moms and families from birth to age 5, and can provide assistance for families with children who have special needs.



*Feel like you don't know  
where to start?*

**W e c a n h e l p .**

Call us at  
1-800-432-4121.



**QUALITY,  
AFFORDABLE  
DENTAL CARE**

*for everyone*



Call us to learn more - 1-877-321-7070

**We accept:**

Medicaid Plans | MIChild | Healthy Michigan Plan | Private Insurance | Uninsured

*[dentalclinicsnorth.org](http://dentalclinicsnorth.org)*

## **Emergency Dial 9-1-1** for ambulance, police, fire

Poison Control  
**(800) 222-1222**

Report Child/Adult Abuse and Neglect  
**(855) 444-3911**

Women's Resource Center  
**24/7 Sexual Assault/Domestic Abuse Hotline**  
**(231) 347-0082 or (800) 275-1995**

North Country Community  
Mental Health Emergency Services

Business Hours:  
**(877) 470-7130**

After Hours:  
**(877) 470-4668**

Suicide Prevention Crisis Hotline  
**(800) 273-8255**

### **American Red Cross Blood Services**

(231) 753-3253  
[www.redcrossblood.org](http://www.redcrossblood.org)

### **Disaster Emergency Services**

(231) 947-7286 ext. 7411, 7412, or 7417  
[www.redcross.org](http://www.redcross.org)

### **Health & Safety (CPR, First Aid, etc.)**

(231) 947-7286 ext. 7418  
or 800-Red Cross/800-733-2767  
Option #3 / [www.redcross.org](http://www.redcross.org)

### **Military Services Assistance/ Service to Armed Forces**

(877) 272-7337  
[www.redcross.org](http://www.redcross.org)

### **BASES**

(231) 547-1144  
208 W. Lincoln St.,  
Charlevoix, MI 49720  
[www.basesteincenter.org](http://www.basesteincenter.org)  
Substance abuse services  
for teens and adults  
Assessments & Outpatient Counseling  
Groups for teens, men and women  
Medicaid accepted

### **Child & Family Services of Northwestern Michigan**

(231) 347-4463  
3434 M119 Suite F,  
Harbor Springs, MI 49740  
[www.cfs.org](http://www.cfs.org)  
Adoption Services  
Foster Care Placement  
Counseling  
License Foster Homes

### **Harbor Hall, Inc.**

(231) 347-5511; Toll-Free (888) 880-5511  
704 Emmet St., Petoskey, MI 49770  
[www.harborhall.com](http://www.harborhall.com)  
Short Term and long term residential  
treatment for adult males  
Sub-Acute detoxification  
services for adult males  
Transitional living for  
graduates adult males  
Outpatient Services: Locations  
in Petoskey and Cheboygan  
Services for adult and adolescents,  
male and female  
Individual, group and family therapy  
Assessments- substance use  
and behavioral health  
Gaming Addiction Services  
Health Professional's Recovery Program  
Women's Wellness Programing  
Treatment Court Participation

### **Love INC, Love In the Name of Christ**

(231) 331-8700  
P.O. Box 927, Petoskey, MI 49770  
[www.loveinc.org](http://www.loveinc.org)  
Love INC provides phone assessments  
to help care for neighbors in need  
in holistic ways including pointing  
them towards collaborating agencies,  
churches, and individuals.

### **North Country Community Mental Health**

1420 Plaza Dr., Petoskey, MI 49770  
(231) 347-6701 Emmet  
06250 M66 North, Charlevoix, MI 49720  
(231) 547-5885 CHX

### **24-Hour Crisis Help Line: 877-470-4668**

Individual and group therapy for adults  
Assertive Community Treatment  
Community support services including  
Case Management, Petoskey Club  
(psychosocial), Supported Employment  
services & Residential services  
Infant Mental Health Services  
Office-based child and family therapy  
Home-based therapy for  
children and families  
Parenting Groups  
Community and family support services for  
persons with developmental disabilities  
Psychiatric services for adults and children  
Emergency Services

### **Safe Families for Children**

(231) 215-1645

[www.safe-families.org](http://www.safe-families.org)

SFFC helps parents experiencing a temporary crisis by providing a loving family with whom their children may stay until the crisis has passed. SFFC also helps connect the parents in crisis to existing resources in the community to help them get back on their feet. Safe Families is a free service and is non-coercive. Parents maintain full custody of their children throughout the duration of the hosting.

### **Women's Resource Center of Northern Michigan**

(231) 347-0067

423 Porter, Petoskey, MI 49770

[www.wrcnm.org](http://www.wrcnm.org)

24-Hour crisis and information line:

(231) 347-0082, (800) 275-1995

Safe Home emergency shelter for survivors of domestic abuse and their children

Counseling/advocacy services for current and past survivors of domestic abuse, sexual assault, child abuse, child sexual assault/abuse, stalking and harassment

Quality educational programming for children ages 2-1/2 to 10: preschool and before/after school programming year round

Weekly playgroups for families/caregivers with children under five

Prevention programming for schools and community: sexual assault, domestic/dating abuse and healthy relationships

Great Start Readiness Program (GSRP) for eligible 4-year-olds

Gold Mine Resale Shops provide gently used, affordable goods and vouchers for survivors, fire victims and special circumstances

Educational and Employment

Services, Working Wardrobe

Support groups: domestic abuse, sexual assault Information, referrals and speakers on a variety of topics related to services the agency provides

### **Support groups for survivors of domestic abuse and sexual assault**

Call Women's Resource Center of Northern

Michigan for times and locations in Petoskey, Mancelona and Gaylord, at (231) 347-0067.



### **Additional Counseling & Crisis Service Resources:**

*Department of Health and Human Services  
(see Government & Legal Services)*

*Hospice (see Health Services)*

*Little Traverse Bay Bands of Odawa Indians  
(see Native American Services)*

*Northwest Community Action Agency (see  
Housing & Utility Assistance Services)*



## Education

### Charlevoix-Emmet ISD

(231) 547-9947, [www.charemisd.org](http://www.charemisd.org)  
08568 Mercer Blvd., Charlevoix, MI 49720  
Alternative education programs,  
including a teen parent program  
Special education services (birth to age 26)  
Early Childhood Special Education  
Services and Programs  
Early On Northwest (birth to age 3)  
Great Start Readiness Program  
(4 yr. old tuition free preschool)

### Antrim County Area Schools:

Central Lake Public Schools  
(231) 544-3141, [www.clps.k12.mi.us/](http://www.clps.k12.mi.us/)  
Ellsworth Community School  
(231) 588-2544, [www.ellsworth.k12.mi.us](http://www.ellsworth.k12.mi.us)  
Ebenezer Christian School  
(231) 588-2111, [www.ebenezerchristian.org](http://www.ebenezerchristian.org)

### Charlevoix County Area Schools:

Beaver Island Community School  
(231) 448-2744, [www.beaverisland.k12.mi.us](http://www.beaverisland.k12.mi.us)  
Boyne City Public Schools  
(231) 439-8190, [www.boyne.k12.mi.us](http://www.boyne.k12.mi.us)  
Boyne Falls Public School  
(231) 549-2211, [www.boynefalls.org](http://www.boynefalls.org)  
Charlevoix Montessori  
(231) 547-9000, [www.cma.edu](http://www.cma.edu)  
Charlevoix Public Schools  
(231) 547-3200, [www.rayder.net](http://www.rayder.net)  
Concord Academy Boyne  
(231) 582-0194, [www.concordboyne.com](http://www.concordboyne.com)  
East Jordan Public Schools  
(231) 536-3131, [www.ejps.org](http://www.ejps.org)  
St. Mary School  
(231) 547-9441, [www.stmaryschoolcharlevoix.com](http://www.stmaryschoolcharlevoix.com)

### Emmet County Area Schools:

Alanson Public Schools  
(231) 548-2261, [www.alansonvikings.net](http://www.alansonvikings.net)  
Concord Academy Petoskey  
(231) 439-6800, [www.concordpetoskey.com](http://www.concordpetoskey.com)  
Harbor Light Christian School  
(231) 347-7859, [www.harborlightchristian.org](http://www.harborlightchristian.org)  
Harbor Springs Public Schools  
(231) 526-4545, [www.harborps.org](http://www.harborps.org)  
Pellston Public Schools  
(231) 539-8682, [www.pellstonschools.org](http://www.pellstonschools.org)  
Petoskey Seventh Day Adventist  
(231) 347-6651, [www.petoskeymi.adventistchurch.org](http://www.petoskeymi.adventistchurch.org)  
Public Schools of Petoskey  
(231) 348-2100, [www.petoskeyschools.org](http://www.petoskeyschools.org)  
St. Francis Xavier School  
(231) 347-3651, <http://school.petoskeyfx.org/>  
St. Michael Academy  
(231) 881-9025, [www.stmichaelra.com](http://www.stmichaelra.com)  
North Central Michigan College  
(231) 348-6600, [www.ncmich.edu](http://www.ncmich.edu)

### Tuition FREE Preschool

(800) 443-5518, [www.greatstartforkids.com/Preschool.html](http://www.greatstartforkids.com/Preschool.html)  
Tuition Free Preschool Programs are available throughout Charlevoix, Emmet and northern Antrim Counties. These Tuition Free Preschool programs are the Great Start Readiness Programs operated by local school districts and community partners and the Head Start Programs operated by the Northwest Michigan Community Action Agency and the Little Traverse Bay Bands of Odawa Indians. Families with children ages 3 and 4 are encouraged to call 1-800-443-5518 to learn about the programs and to complete an application. Programs do have eligibility and prioritization requirements.

### Great Start to Quality

[www.GreatStartToQuality.org](http://www.GreatStartToQuality.org)  
Looking for child care or preschool?  
Great Start to Quality is Michigan's state-wide searchable database of all licensed early learning programs.

### Great Start to Quality Northwest Resource Center

(877) 614-7328  
[www.GreatStartToQuality.org](http://www.GreatStartToQuality.org)  
Helping support providers and educators improve the quality of their programs and care, the Great Start to Quality Northwest Resource Center serves Antrim, Benzie, Charlevoix, Emmet, Grand Traverse, Kalkaska, Leelanau, Manistee, Missaukee, and Wexford counties.

## Child & Parenting Services

### Ages & Stages Questionnaire (ASQ)

[www.nwhealth.org/agesandstages](http://www.nwhealth.org/agesandstages)  
Ages & Stages is a screening toolkit designed for parents and others for children from birth to age five. It is free, confidential, helps parents and caregivers know what to expect, builds new skills, identifies developmental concerns, and can be done online from home!

### Big Brothers Big Sisters of Northern Michigan

(231) 313-7323  
523 W. Jefferson,  
Petoskey, MI 49770  
[www.bigsupnorth.com](http://www.bigsupnorth.com)  
Develop and nurture one-to-one (adult-child) mentoring relationships for kids ages 6-18 with a caring adult mentor. Mentors provide support, guidance and opportunities on a consistent basis to help a child achieve greater self-confidence, develop stronger relationships, and achieve educational success.



## **Child Abuse Prevention and Education Council**

(231) 753-8511

[www.UpNorthChildAbuseCouncil.org](http://www.UpNorthChildAbuseCouncil.org)  
[childabusecouncil@gmail.com](mailto:childabusecouncil@gmail.com)

Our local council distributes literature on child development, parenting, and prevention. Our annual conference is held each April on issues regarding the mental and physical well-being of children. We celebrate Parenting Awareness Michigan in March with the "What Makes Your Family Strong?" essay and drawing contests, and recognize individuals who go above and beyond to positively impact the lives of children in our community. Please contact us for more information.

## **Diaper & Paper Panties Report Child/Adult Abuse and Neglect: (855) 444-3911**

Antrim Baby Pantry  
St. Anthony's Catholic Church  
209 Jefferson, Mancelona  
231.587.8401  
2nd & 4th Thur. 11:30 a.m. – 4 p.m.

BC Diaper Pantry  
Christ Lutheran Church  
1050 Boyne Ave., Boyne City  
(231) 582.9301  
2nd Sat. 10 a.m. – noon

Charlevoix Diaper Pantry  
First Congregational Church  
101 State Street, Charlevoix  
(231) 547.5752  
2nd Mon. & 2nd Thur. 10 a.m. – noon

NM Diaper Pantry  
8791 McBride Park Court, Petoskey  
231.347.8852  
1st & 3rd Fri. 9:30 – 11 a.m.

Cross of Christ Paper Pantry  
1450 E. Mitchell Street, Petoskey  
(231) 347.5448  
2nd Thur. 5 – 6:30 p.m.  
4th Thur. 9-10:30 a.m.

Mom & Tots Center  
9100 Pleasant Hill Rd, Ellsworth  
(231) 588.2200  
Tues/Wed/Thurs 10-4, 1st Tues 10-7

## **Early Head Start**

(231) 548-1240 ext.2, <http://www.nmcaa.net>

The NMCAA Early Head Start program is a home visiting program serving expectant mothers and children birth to three years. During weekly home visits, activities are provided to help your child learn and grow. Socialization opportunities are available through playgroup experiences. Please call for more information!

## **Great Start Collaborative & Great Start Parent Coalition**

(877) 866-3714

[www.greatstartforkids.com](http://www.greatstartforkids.com) &  
[www.whatmakesyourfamilystrong.com](http://www.whatmakesyourfamilystrong.com)  
The Great Start Collaborative identifies local needs, and implements research based strategies to assure a coordinated system of community resources and support for young children and their families. One of our major priorities has been the implementation of the Strengthening Families Model that promotes 5 Protective Factors to make families strong. Every event, project, or training addresses and builds these 5 Protective Factors in families: Parental Resilience; Social Connections; Knowledge of Parenting & Child Development; Concrete Support in Times of Need; and Social and Emotional Competence of Children.

Great Start Parent Coalition

Great Start Parent Leadership Council

FreeCycle Book Project

FreeCycle Halloween Costume Exchange

Early Childhood Networking Nights  
(Parent & Caregiver Education)

Parenting Awareness Month Events

Early Childhood Professional  
Development & Collaboration

Strengthening Families Protective  
Factors Campaign

## **Libraries**

All area residents should have a library dedicated to serving them. To find out if you are eligible for a free card at a given library, call the one that is closest to you; it may not be your library, but they can refer you to the one that is. Area libraries have many FREE programs for children from birth to 18 and adults as well. Call or check their web sites. Holding a card at a given library usually isn't necessary to attend their public programs.

Alanson Area Public Library  
(231) 548-5465, <http://joomla.uproc.lib.mi.us/Alanson/>

Bliss Branch  
(231) 537-2927, [www.mackinawareapl.michlibrary.org](http://www.mackinawareapl.michlibrary.org)

Beaver Island District  
(231) 448-2701, [www.beaverisland.michlibrary.org](http://www.beaverisland.michlibrary.org)

Boyne District Library  
(231) 582-7861, [www.boynelibrary.org](http://www.boynelibrary.org)

Charlevoix Public Library  
(231) 547-2651, [www.charlevoixlibrary.org](http://www.charlevoixlibrary.org)

Crooked Tree Boyne Falls  
(231) 549-2277, [www.crookedtreelibrary.org](http://www.crookedtreelibrary.org)

Crooked Tree Walloon  
(231) 535-2111, [www.crookedtreelibrary.org](http://www.crookedtreelibrary.org)

Harbor Springs  
(231) 526-2531, [www.harborspringslibrary.org](http://www.harborspringslibrary.org)

Jordan Valley District Library  
(231) 536-7131, <http://jvdl.info/>

Mackinaw Area Public Library  
(231) 436-5451,  
[www.mackinawareapl.michlibrary.org](http://www.mackinawareapl.michlibrary.org)

Pellston Branch  
(231) 539-8858, [www.mackinawareapl.michlibrary.org](http://www.mackinawareapl.michlibrary.org)

Petoskey District Library  
(231) 758-3100, [www.petoskeylibrary.org](http://www.petoskeylibrary.org)

**Continued on page 10**

Continued from page 9

## **Mothers Keepers**

(231) 622-9640

MothersKeepers.org

Mothers Keepers matches trained volunteers from the community to families with infants (under age 1) in Emmet and Charlevoix Counties. Services provided include light housekeeping, accompaniment to doctors appointments, entertaining older children so mother can rest, connection to local resources of interest, and others. Service is free to families with infants regardless of income.

## **Moms & Tots Center**

(231) 588-2200

9100 Pleasant Hill Rd., Ellsworth, MI 49729

www.thegoodsam.org

Tuesdays-Thursdays: 10am-4pm

1st Tuesdays: 10am-7pm

Equipping mothers with the means needed to raise happy, healthy children.

Assists clients by providing a nurturing safe environment to prepare clients for motherhood and parenting.

Baby Resource Closet: Providing mothers with baby necessities on a monthly basis.

Earn While You Learn Program:

Education classes where hours spent learning can earn families larger baby equipment like car seats, cribs, etc.

Pregnancy Resource Center: Services include pregnancy tests, pregnancy information, adoption information, abortion alternatives, post abortion support, STI information, abstinence education, maternity clothes, peer counseling, and community referrals and resources.

GED Access Point

## **MSU Extension**

### **Charlevoix County**

(231) 348-1770

3434 Harbor-Petoskey Rd.,

Harbor Springs, MI 49740

www.msue.msu.edu/emmet

Community Leadership Development

Conflict Management

Community Decision Making Process

Community Based Entrepreneurship

New Venture and Innovation Counseling

including natural resource, green energy

and food business enterprise education

Youth Development Programs

Citizenship and Community Service and

Life Skill Development Programs

Parent/Caregiver Education

Building Healthy Communities

Chronic Disease Management

and Prevention

Healthy Eating and Physical Activity

### **Charlevoix County 4-H**

(231) 582-6232

319 B North Lake St., Boyne City, MI 49712

www.msue.anr.msu.edu/

county/info/charlevoix

Spring/Summer/Fall 4-H Programs:

Recreation Soccer, Swimming,

Sailing, Tennis, Community

Service, Animal Science

Summer 4-H Camps:

Exploration Days: College Prep

Experience, Soccer Camp

### **Emmet County 4-H**

(231) 348-1770

3434 M119, Petoskey, MI 49770

www.msue.msu.edu/emmet

Youth Development, Volunteer

Development and Training, Leadership

Training, Animal Science, Citizen

and Community Service, Exploration

Days: College Prep Experience.

## **YMCA of Northern Michigan**

(231) 348-8393, www.ymcanm.org

523 W. Jefferson, Petoskey, MI 49770

The Y is for youth development, healthy living, and social responsibility. Some of our programs include summer day camp, after school childcare, youth sports & enrichment, STEM programs and so much more. At the Y, no family is turned away for an inability to pay. Our Financial Assistance program offers opportunities for all children to learn, grow and thrive.

---

## **Additional Education, Child, & Parenting Service Resources:**

*Department of Health and Human Services (see Government & Legal Services)*

*Disability Network of Northern Michigan (see Disability Services)*

*Health Department of Northwest Michigan (see Health Services)*

*Little Traverse Bay Bands of Odawa Indians (see Native American Services)*

*Northwest Michigan Community Action Agency (see Housing & Utility Assistance Services)*

*North Country Community Mental Health (see Health Services)*

*Safe Families For Children (see Counseling & Crisis Services)*

*The Salvation Army (see Housing & Utility Assistance Services)*

*Women's Resource Center of Northern Michigan (see Counseling & Crisis Services)*

# LOOKING FOR PRESCHOOLS?



Now taking applications for the 2020-2021 school year.

For More Information Contact

**1-800-443-5518**

- Your family may be eligible for tuition free preschool
- Taking applications for children ages 3 and 4 before December 1, 2020
- Families and children of all abilities are encouraged to apply



These materials were funded in whole or in part under a grant awarded by the Michigan Department of Education.



## PLANNED PARENTHOOD IS...

birth control  
STI testing & treatment  
HIV prevention  
pregnancy options  
sex education  
wellness exams  
morning after pill  
sexual health  
cancer screenings  
LGBTQ+ health  
pregnancy testing  
HPV vaccine  
**HEALTH CARE.**



1003 Spring St., Petoskey | 231-347-9692  
Book your appointment online at PPMI.org



## FOSTER PARENTS NEEDED

Do you have room in your home and in your heart?  
BECOME A FOSTER PARENT TODAY!  
SUPPORT AND TRAINING PROVIDED

Traverse City  
231.946.8975

Harbor Springs  
231.347.4463

Serving over  
20 counties in  
northern Michigan!



of Northwestern Michigan

[www.cfsnwmi.org](http://www.cfsnwmi.org)

Support in times of challenge, crisis, and life transition.

PN18046831

# NEW BEGINNINGS + RESALE

- Supports Catholic Education by assisting St. Francis Xavier School in keeping tuition at a reasonable cost.
  - Partnering with Saint Vincent de Paul, assists families who are in need.
- Supports Area Missions/Giveaways by donating loads of clothing & shoes
  - Donates to Benefits/Silent Auctions
- Donates Books/items to Schools & Various Children's Programs & MORE

**Volunteers needed!**

**18,000 Sq ft of Shopping Area ...It's Huge!!!**

*New Beginnings Resale is a Ministry of Holy Childhood Church*

**MONDAY-FRIDAY 9-6 SATURDAY 9-5 • 650 W. Conway Rd, Harbor Springs  
348-2980 • <https://newbeginningsresale.com>  
Email: [nbthrift@sbcglobal.net](mailto:nbthrift@sbcglobal.net) **

PN1720851



## PROVIDING COMPREHENSIVE OBSTETRICAL SERVICES

Including:

- On-site Labs
- Breast Health Exams
- Family Planning
- Infertility Treatment
- MonaLisa Touch Laser
- Gyn Evaluations, Cancer Screening & Pelvic Disease/Pain Treatment

Dr. Mary Ivey  
 Dr. Joe Sypniewski  
 Dr. Kara Cockfield  
 Dr. Kendra Johnson  
 Dr. Emma Rodgers  
 Dr. Tim Wilcox

**560 W Mitchell St #210**  
**Petoskey MI 49770**  
**231.487.2340 • 866.229.3894**  
**bayviewob.com**

PN-801933-1

# Providing Essential Services for **FAMILIES**



### Counseling/Advocacy

- Domestic Abuse
- Sexual Assault
- Child Abuse/Sexual Assault



### Children's Services

- Children's Learning Center
- Project FREE Preschool
- Free Community Playgroups



### Educational and Employment Services

- Academic Advising
- Career Guidance
- Educational Scholarships

### Violence Prevention

- Programs for schools, businesses and organizations



### Gold Mine Resale Shop

- Supports WRCNM services
- Two locations in Petoskey:  
1878 N. US-31, (231) 348-7908  
1002 Emmet St., (231) 347-3970
- Gold Mine North open Fridays until 8pm during the summer!

SERVING NORTHERN MICHIGAN SINCE 1977



**WOMEN'S RESOURCE CENTER  
OF NORTHERN MICHIGAN, INC.**

24-Hour Help and Information Line  
**(231) 347-0082 • (800) 275-1995**  
 info@wrcnm.org • wrcnm.org

*Antrim, Charlevoix, Cheboygan, Emmet and Otsego counties*



## **Manna Food Project**

(231) 347-8852  
8791 McBride Park Ct.,  
Harbor Springs, MI 49740  
www.mannafoodproject.org  
Food distribution Center of Antrim,  
Charlevoix, and Emmet counties,  
Food Rescue Program & Food  
4 Kids Backpack Program

## **Antrim County Senior Meals**

**Commission on Aging**  
1622 N M-88, Central Lake  
Mon. – Fri. 9 a.m. 2 p.m.  
Reservations Required  
(231) 544-6687, Age 60+

**Commission on Aging  
Sacred Heart Church**  
143 Charles St., Elk Rapids  
Tues. – Fri. 9 a.m. 1 p.m.  
Reservations Required  
(231) 264-6490, Age 60+

**Commission on Aging  
Community Center**  
122 E. State St., Mancelona  
Mon. – Fri. 9 a.m. 1:30 p.m.  
Reservations Required  
231.587.9131, Age 60+

**Commission on Aging**  
308 E. Cayuga, Bellaire  
Mon. – Fri. 11:15 a.m. 1:30 p.m.  
(231) 533-8703, Age 60+

**Mancelona Community  
United Methodist Church**  
301 Hinman, Mancelona  
Tuesday 5 – 6 p.m.

**Charlevoix County Pantries  
Boyne Valley Pantry**  
Thursday 2-5 p.m.  
(231) 468-4612  
3031 Main St., Boyne Falls

**Seventh Day Adventist**  
Monday 5:30-7 p.m.  
(231) 582-0151  
326 North Park, Boyne City

**Good Neighbors Food Pantry**  
Tuesdays 10 a.m.-12 p.m. and 2-5:30 p.m.  
(231) 497-8677  
624 State St., Boyne City

**Bible Baptist Church**  
1st and 3rd Thursday 6-7 p.m.;  
call for emergencies  
(231) 547-4300  
05855 M-66 North, Charlevoix

**Charlevoix Community**  
Monday 10-11:45 a.m. & 5:30-  
7:15 p.m., 1st Thursday of the  
month from 10 – 11:45 a.m.  
(231) 237-9490  
100 West Hurlbut, Charlevoix

**Care & Share**  
Tuesday 3-6 p.m.;  
Thursday 9 a.m.-12 p.m.  
(231) 536-7423  
205 Water St., East Jordan

**Green Sky Hill Indian UMC**  
08484 Green Sky Hill Road  
Sunday 9 – 10 a.m.  
(231) 459-8067

**Jordan Rivers**  
Every other Friday 2-4 p.m.  
(231) 649-4312  
01273 Advance Rd., East Jordan

**Lighthouse Lunch  
United Methodist Church**  
104 State St., Charlevoix  
Mon. & Thur. 11:30 a.m. – 1:30 p.m.  
(231) 547-8040

**Safe Haven Breakfast Club  
Community Reformed Church**  
Petoskey Ave. and Meech, Charlevoix  
Tues. & Fri. 8 – 10 a.m.

**Charlevoix County  
Soup Kitchens  
Community Reform  
Church / Safe Haven**  
Tuesday & Friday 8-10 a.m.  
US 31 & Meech, Charlevoix

**East Jordan Community Center**  
Monday-Friday 12-12:30 p.m.  
(231) 536-7831  
951 Mill St., East Jordan

**Third Day Fellowship**  
Monday & Thursday 2-6 p.m.  
(231) 547-8040  
United Methodist Church, 104  
State St., Charlevoix

**Charlevoix County  
Senior Meals  
Boyne Area Senior Center**  
Monday- Friday 12-12:30 p.m.  
(231) 582-6682  
411 Division St., Boyne City

**Charlevoix Senior Center**  
Monday –Friday 12-12:30 p.m.  
(231) 547-5391  
06906 Norwood Rd., Charlevoix

**East Jordan Senior Center**  
Monday – Friday 12-12:30 p.m.  
(231) 536-7831  
951 Mill St., East Jordan

**Emmet County Pantries  
Nazarene Church**  
Wednesday 4-5:30 p.m.  
(231) 548-5462  
7489 Mission Rd., Alanson

**Jesus is Lord Pantry**  
2nd and 4th Tuesday 12-3 p.m.  
(231) 347-3618  
06072 US 31 North, Bay Shore

**Harbor Springs Community**  
Monday 9:30am-12 p.m.  
(231) 526-2017, ext. 43  
150 West Main (enter through double  
doors on 3rd Street), Harbor Springs

**The Manna Pantry**  
Tuesday 9 a.m.-12 p.m.;  
call for emergencies  
(231) 347-8852  
8791 McBride Park Ct., Harbor Springs



**Pellston Community**

Wednesday 5-6:45 p.m.  
 (231) 638-3568  
 161 Highway 31, Pellston

**First Christian Church**

Monday 10 a.m.-12 p.m.  
 (231) 347-6181  
 320 Monroe, Petoskey

**Salvation Army**

Monday - Friday 9-11:00 a.m.  
 (231) 347-3531  
 712 Pleasant St., Petoskey

**St. Francis/Brother Dan's**

Tuesday 9 a.m.-12 p.m.; call  
 for emergencies  
 (231) 347-7423  
 415 State St., Petoskey

**Cross of Christ Church**

2nd Thursday 5-7 p.m.; 4th  
 Thursday 9-11 a.m.  
 (231) 347-5448  
 1450 East Mitchell St., Petoskey

\* Paper and Personal care pantry only

**Emmet County  
Soup Kitchens****First Presbyterian Church**

Thursday and Sunday 12-1 p.m.  
 (231) 347-4792

501 East Mitchell St., Petoskey

**First Christian Church**

Lunch meal Monday  
 11:30 a.m.-12:30 p.m.  
 (231) 347-6181  
 308 Monroe, Petoskey

**Nazarene Church**

Wednesday 4-5:30 p.m.  
 (231) 548-5462

7489 Mission Rd., Alanson

\*Serve soup only

**St. Francis/Brother Dan's**

Lunch meal Tuesday 12-1 p.m.  
 (231) 347-7423  
 415 State St., Petoskey

**United Methodist Church**

Wednesday 6-6:45 p.m.  
 (231) 347-2733  
 1804 E. Mitchell, Petoskey

**Emmet County Senior Meals  
Harbor Springs Friendship Center**

Monday – Friday 12 p.m.  
 (231) 526-6061  
 305 W. Main, Harbor Springs

**Huber/Brutus Senior Center**

Wednesday and Friday 12 p.m.  
 (231) 529-8803  
 6436 E. Brutus Rd., Brutus

**Pellston Senior Center**

Monday, Tuesday, Thursday 12 p.m.  
 (231) 539-8201  
 6274 W. Edgar, Pellston

**Friendship Center of  
Emmet County**

Monday – Friday 12 p.m.  
 (231) 347-3211  
 1322 Anderson Rd., Petoskey

**Salvation Army**

Friday 6:00 p.m.  
 (231) 347-3531  
 712 Pleasant St., Petoskey

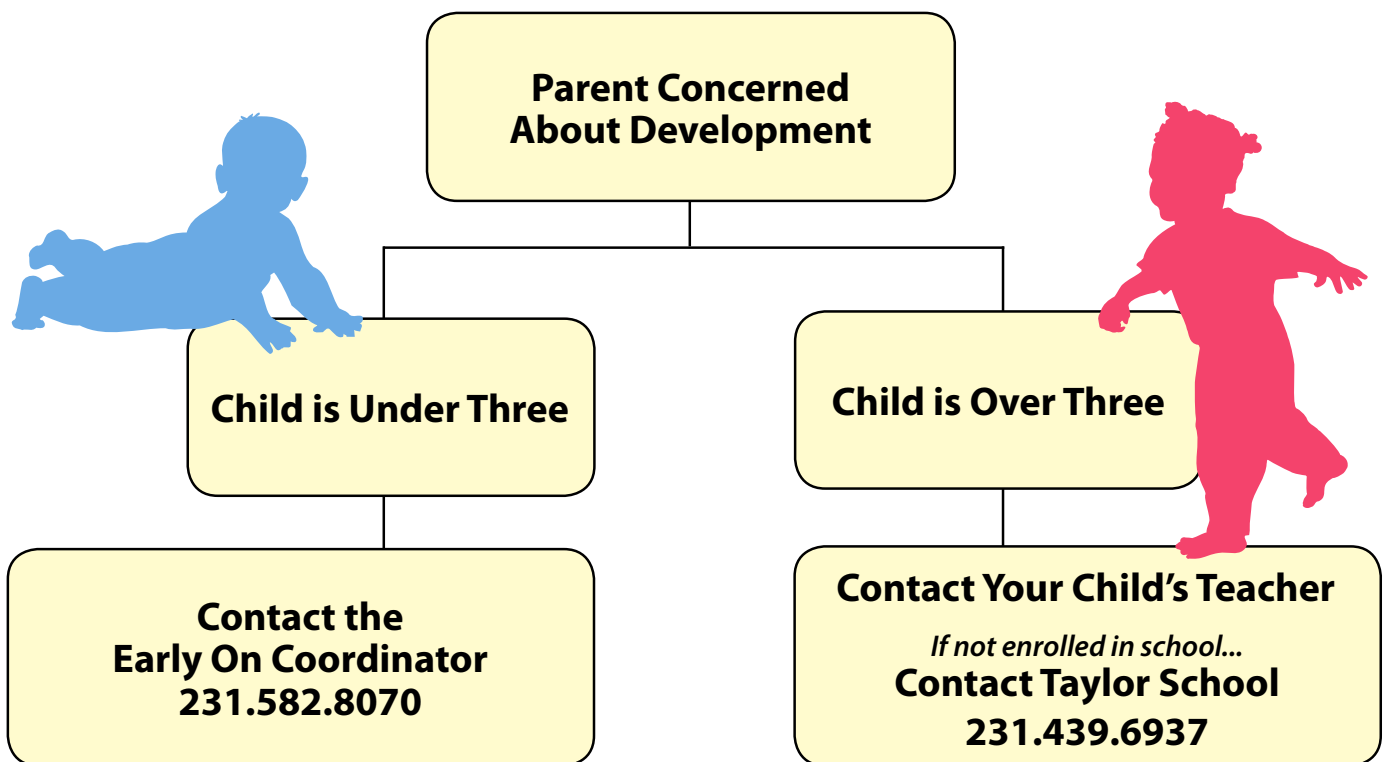
**For Diaper Pantries, see  
Education and Parenting****Additional Food****Assistance Resources:**

Department of Health and Human  
 Services (see Government  
 & Legal Services)  
 Little Traverse Bay Bands of Odawa  
 Indians (see Native American Services)  
 Northwest Community Action  
 Agency (see Housing & Utility  
 Assistance Services)  
 Salvation Army (see Housing &  
 Utility Assistance Services)  
 Health Department of Northwest  
 Michigan WIC (see Health Services)



# Concerned about your child's development?

Charlevoix-Emmet Intermediate School District provides services to children birth to age six with developmental delays or disabilities.



# Great Start to Quality

The Great Start to Quality Northwest Resource Center congratulates the early care and learning programs in Charlevoix, Emmet, and northern Antrim counties participating in Great Start to Quality. We thank you for your commitment to ongoing quality!

Great Start to Quality is Michigan's early childhood quality rating and improvement system. Programs participating in Great Start to Quality are working above and beyond state licensing requirements and are supported by early childhood consultants to provide children and families with high standards of care, safety, professionalism, and early learning.

Great Start to Quality programs are rated on a 1-5 star level based on statewide quality standards, with 5 being the highest rating.

For a complete list of all licensed programs and more information on star ratings, visit **GreatStartToQuality.org** or call the Great Start to Quality Northwest Resource Center at **1-877-614-7328**.

*\*Programs with GSRP next to their name are participating in the state funded Great Start Readiness Program for four year olds and have a rating of 3 stars or higher.*



These programs are committed to high quality early learning!

## ALANSON

- Alanson Stretch Kindergarten Extended
- Kimberley Givens
- Michelle Greenacre
- NMCAA Preschool – GSRP

## BOYNE CITY

- Boyne City Preschool – GSRP
- Melissa Casper
- Early Learners Program – GSRP
- Leasa Friedrich
- ToddlerVille Daycare
- NMCAA Preschool – GSRP

## BOYNE FALLS

- Boyne Falls School – GSRP

## CENTRAL LAKE

- Central Lake Public Schools
- NMCAA Preschool – GSRP

## CHARLEVOIX

- Bright Beginnings – GSRP
- Michelle Holecheck
- NMCAA Preschool
- Northern Explorers Child Development Center
- Jennifer Pittman
- Kristina Prevo
- Melissa Swanson
- Saint Mary Pre K

## EAST JORDAN

- East Jordan Elementary – GSRP
- NMCAA Preschool

## ELLSWORTH

- Ellsworth Community School – GSRP

## HARBOR SPRINGS

- Ashley Hall
- Blackbird Preschool – GSRP

## PELLSTON

- Bear Cub Child Care Center
- Pellston Elementary – GSRP

## PETOSKEY

- Children's Learning Center – GSRP
- Lisa's Day Care - Anna Lisa Bechaz
- Elizabeth Jerichow
- NMCAA Preschool
- NMCAA Preschool, Ottawa – GSRP
- Northern MI Community Child Development Center
- Petoskey Children's Nursery



## Beaver Island Rural Health Center

(231) 448-2275  
37304 King's Hwy., Beaver Island  
www.biruralhealth.org  
Open Monday – Friday by appt.,  
24 hr. Urgent Care

## Boyne Area Free Clinic

(231) 582-4605  
624 State St., Boyne City, MI 49712  
Open Fridays 8 a.m. – 4 p.m.  
Primary and urgent care for the  
uninsured and the under-insured

## Community Health Center of Northern Michigan

(231) 348-9900  
3434 M-119, Suite C.,  
Harbor Springs, MI 49740  
www.alconahealthcenters.org  
www.facebook.com/  
alconahealthcenters  
Hours: Monday - Friday 8am - 5pm  
Primary Care Services:  
Patient-Centered Medical Home offering  
healthcare for the entire family  
Health education  
Case Management  
Behavioral health counseling  
Low-cost medications  
Laboratory services  
Dental care by referral  
Insurances accepted: Medicaid, Medicare,  
Northern Health Plan, Blue Cross/  
most commercial insurances  
Services offered regardless of  
ability to pay. Special discounts  
available based on income  
Health Insurance Marketplace  
enrollment assistance  
Medicaid enrollment assistance

## Dental Clinics North

(877) 321-7070  
Catering to patients with Medicaid, Delta  
Healthy Kids, Northern Dental Plan, Low  
Income/uninsured, all private insurance

East Jordan  
601 Bridge St., East Jordan, MI 49727  
(866) 878-6551

Mancelona  
205 Grove St., Mancelona, MI 49659  
(866) 878-3553

Petoskey  
3434 M-119, Suite B,  
Harbor Springs, MI 49740  
(866) 878-6556

## East Jordan Family Health Center

(231)536-2206  
601 Bridge St., East Jordan, MI 49727  
www.ejfhc.org  
Hours: Monday – Friday: 8 a.m. – 6 p.m.;  
Saturday 9 a.m. – 1 p.m.

East Jordan Family Health Center is a  
certified Patient Centered Medical  
Home offering primary health care  
services for the entire family, from  
newborn through geriatric. We believe  
all patients should receive high quality  
healthcare, regardless of their income  
or ability to pay. East Jordan Family  
Health Center offers a Sliding Fee  
Discount Program, based on family  
size and income and accepts Medicaid,  
Medicare, Healthy Michigan Plan and  
most commercial insurances. Services  
available onsite: Primary Care for  
all ages, Referral Services, Pharmacy  
Services (also with convenient drive-  
thru service), X-Ray, Mammography,  
Laboratory Services (Provided by  
DBML) Behavioral Health Services,  
Case Management, Health Education,  
Medicaid Enrollment Assistance, Health  
Insurance Marketplace Enrollment  
Assistance, Prescription Assistance

## Health Department of Northwest Michigan

3434 Harbor-Petoskey Rd., Suite A,  
Harbor Springs, MI 49740  
220 W. Garfield, Charlevoix, MI 49720  
Program/Appointment Information  
(231) 547-0295 or 1 (800) 432-4121  
www.nwhealth.org  
Women, Infants, and Children  
Nutrition Program providing free  
food and fluoride varnish  
WIC Clinics located in Boyne  
City, Beaver Island, Charlevoix,  
Harbor Springs, and Pellston  
Immunizations for children and  
adults free or reduced costs  
Maternal and Infant Health  
Program- Home visits for pregnant  
and parenting families  
Children's Special Health Care Services-  
Payment and Care Coordination  
for special needs children  
Children's Health Access Program (CHAP)  
Early Childhood Behavioral Health  
Healthy Kids and MiChild Insurance  
for pregnant women and children  
enrollment assistance  
Healthy Families Northern MI  
Home Visiting (ages 0-4)  
Family Planning- birth control methods  
and services based on ability to pay  
Breast and Cervical Cancer screening  
for women 40-64 free if you  
meet income guidelines



## WISEWOMAN

provides  
cholesterol screening and  
healthy lifestyle support  
Colorectal Cancer screening  
Dental Health Clinics for children and  
adults; reduced fees may be available  
through the Northern Dental Plan  
Hearing and vision screening for all  
children preschool through age 18  
Lead testing for free or reduced cost  
HIV counseling and testing  
Home Health and Hospice Services  
Hornet Health Center at Pellston  
Middle/High School provides FREE  
nursing and mental health  
Rambler Wellness Center at Boyne City  
Elementary and Middle School provides  
FREE nursing and mental health services  
Prescription assistance  
Health Insurance Marketplace  
enrollment assistance  
Medicaid and Healthy Michigan  
Plan Enrollment Assistance

## McLaren Northern Michigan

(800) 248-6777  
416 Connable Ave., Petoskey, MI 49770  
www.mclaren.org/northern  
McLaren Northern Michigan offers a full  
range of services representing nearly  
every medical and surgical specialty.  
Whether we are providing care in our  
hospital, a specialty clinic, or through  
our home care, McLaren Northern  
Michigan will provide health care  
as we expect for our own family.

Specialists travel all over northern  
Michigan to deliver care close to home  
in: Alpena, Beaver Island, Charlevoix,  
Cheboygan, Gaylord, Grayling, Hillman,  
Houghton Lake, Indian River, Newberry,  
Onaway, Oscoda, Rogers City, St.  
Ignace, Sault Ste. Marie, and Tawas.

## Munson Healthcare Charlevoix Hospital

(231) 547-4024  
14700 Lake Shore Dr.,  
Charlevoix, MI 49720  
www.munsonhealthcare.org/charlevoix  
Munson Healthcare Charlevoix Hospital  
is a 25-bed acute care community  
hospital offering a wide array of

inpatient and outpatient services to Charlevoix, northern Antrim, and Emmet counties. The hospital with its over 400 employees is part of the large Munson Healthcare system. The expertise of excellent doctors and staff makes it possible to meet many of the primary and specialty care needs of the area residents.

The emergency department is staffed 24 hours a day, 7 days a week and urgent care services are offered from 10am to 8pm everyday (including weekends and holidays). The hospital also has satellite offices in Boyne City and East Jordan. Munson Healthcare Boyne Area Health Center, Munson Healthcare Boyne Rehab Center, and Munson Healthcare Jordan Valley Rehab Center offer local residents non-emergency care and rehabilitation right in their hometown.

### **Munson Healthcare Boyne Area Health Center**

223 N. Park St.,  
Boyne City, MI 49712  
(231) 582-5314

### **Munson Healthcare Boyne Rehab Services**

197 State St., Boyne City, MI 49712  
(231) 582-6365

### **Munson Healthcare Jordan Valley Rehab Center**

100 Main St. #9, East Jordan, MI 49727  
(231) 536-1451

### **Planned Parenthood of West and Northern Michigan**

(231) 347-9692  
1003 Spring St., Petoskey, MI 49770  
www.ppmi.org  
Annual gynecological exams, including pap, pelvic, and breast exams

Birth control consultation

Birth control distribution on site, including the following methods: pills, rings, Depo-Provera injections, emergency contraceptive, IUD's, diaphragms, and non-prescription methods

Diagnosis and treatment of sexually transmitted infections

Diagnosis and treatment of urinary and vaginal infections

HIV testing and counseling

PrEP services

Pregnancy testing and options

Midlife services – evaluation for hormone therapy

Smoking cessation therapies

HPV vaccinations

Comprehensive sexuality education classes

Resources for teens and parents

Online appointment scheduling

Online digital tools and apps

Can bill most health insurances, if you don't have insurance, please call for more information

### **Pregnancy Care Center of Petoskey**

(231) 348-3388  
2206 Mitchell Park Drive, Unit #9  
Petoskey, MI 49770  
www.petoskeypcc.org  
Pregnancy confirmation  
Pregnancy options counseling  
Education  
Supplies  
Community resources  
After abortion care

### **Safe Families**

(231) 421-6494  
Address: 1055 Carriage Hill Dr.  
Ste. 2, Traverse City, MI 49686  
Serving families in crisis in Grand Traverse, Charlevoix and Emmet counties  
Safe-families.org  
Bethany.org/safefamilies

Safe Families for Children is a network of families who volunteer to care for your children for as long as you need. Our goal is to keep your family intact. Once you feel like you and your home environment is stable and healthy we'll work with you to reunite your family as soon as possible. As the parent (or legal guardian), you maintain full custody of your children. And you are encouraged to participate in decisions regarding their care while they are being hosted. Our aim is to form a partnership between you and the volunteer families and see the Host Family as extended family. We encourage the relationship to continue even after your children return home to provide you with lasting support.

## **Hospice**

### **McLaren Home Care's Hospice**

Serving northern Michigan & the eastern Upper Peninsula  
(800) 342-7711  
www.mclaren.org/northern

**Hospice of Michigan** (800) 247-5181



### **Additional Health Service Resources:**

*Department of Health and Human Services (see Government & Legal Services)*  
*Little Traverse Bay Bands of Odawa Indians (see Native American Services)*  
*North Country Community Mental Health (see Counseling & Crisis Services)*  
*MSU Extension (see Education & Child Services)*  
*Veterans Affairs (see Veteran Services)*

# EMPLOYMENT SERVICES

## **Kelly Services**

(231) 347-2963  
1147 North US 31 Hwy,  
Petoskey, MI 49770  
[www.kellyservices.us](http://www.kellyservices.us)

## **Northern Staffing Service**

(231) 347-3144  
2235 East Mitchell Rd.,  
Petoskey, MI 49770  
[www.northernstaffingservices.com](http://www.northernstaffingservices.com)

## **Northwest Michigan Works!**

(231) 347-5150  
2240 Mitchell Park Dr.,  
Suite B, Petoskey, MI 49770  
Monday, Tuesday, Thursday  
8 a.m.-5 p.m.  
[www.networksnorthwest.org](http://www.networksnorthwest.org)  
As the workforce development arm of Networks Northwest, Michigan Works! is a one-stop center for anything pertaining to employment and training. These services include: Job Seeker Services which includes resume assistance, career and training information, interest assessments, job search assistance, and employer services. Michigan Works! also provides Learning Labs for adult individualized instruction, virtual assistance, increasing job skills, and obtaining a GED. Learning Labs Hours: Monday and Thursday 8 a.m.-5 p.m.; Tuesday and Wednesday 9 a.m.-6 p.m.

## **PMP Personnel Services, INC.**

(231) 347-9500  
1170 Bay View Rd., Petoskey, MI 49770  
[www.pmppersonnel.com](http://www.pmppersonnel.com)

## **Additional Employment Service Resources:**

*Disability Network of Northern Michigan (see Disability Services)*  
*Little Traverse Bay Bands of Odawa Indians (see Native American Services)*  
*Michigan Rehabilitation Services (see Disability Services)*  
*Veterans Affairs (see Veterans Services)*  
*Women's Resource Center of Northern Michigan (see Counseling & Crisis Services)*

# GOVERNMENT & LEGAL SERVICES

## **Department of Health and Human Services Antrim, Charlevoix-Emmet**

(231) 348-1600  
2229 Summit Park Dr.,  
Petoskey, MI 49770  
[www.michigan.gov/mdhhs](http://www.michigan.gov/mdhhs)  
Medicaid assistance  
Healthy MI Plan  
Food assistance program  
Adult Protective Services  
Child Protective Services  
Home heating assistance  
Adult in-home help  
State Emergency Relief Program  
Family Independence Program  
State Disability Assistance  
Child Development and Care Program

## **Family Court**

Juvenile delinquent cases  
Neglect and abuse cases  
Foster care placement

## **Emmet County Family Court**

(231) 348-1765  
200 Division St.,  
Petoskey, MI 49770

## **Charlevoix County Family Court**

(231) 547-7215  
301 State St., Charlevoix, MI 49720

## **Legal Services of Northern Michigan**

(888) 645-9993 or (989) 705-1067  
1349 South Otsego Ave., Unit 8,  
Gaylord, MI 49735  
Free legal assistance and representation to low income residents  
Age 60 and older may qualify regardless of income  
Civil cases only – no criminal or traffic  
No cases involving suing for money

## **Northern Community Mediation**

(231) 487-1771  
415 State St.,  
Petoskey, MI 49770  
[www.northernmediation.org](http://www.northernmediation.org)  
Mediation services as an alternative to litigation  
Divorce & domestic relations, parenting time, custody & guardianship, breach of contract, landlord / tenant, professional / client, consumer / merchant, employer / employee, real estate, Civil rights, neighborhood issues, public policy, ordinance & statute, special education, school attendance program, Restorative Practices in schools, child abuse & neglect program, victim offender reconciliation program, preventative shoplifting program

## **Probate Court Charlevoix County**

301 State St. (Second Floor)  
Charlevoix, MI 49720  
(231) 547-7214

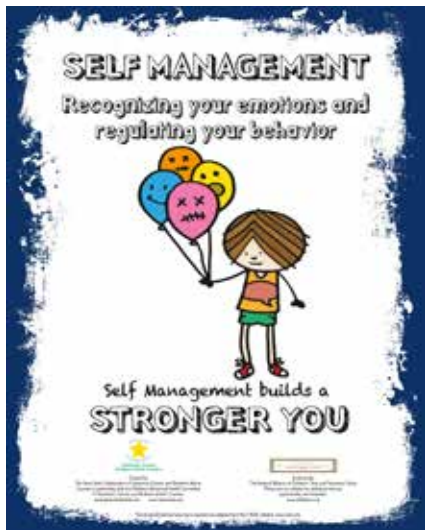
## **Emmet County**

200 Division St.  
Petoskey, MI 49770  
(231) 348-1764  
Guardianship and Conservator, Mental Health proceedings, Adoption, Mediation, Wills/Estates.

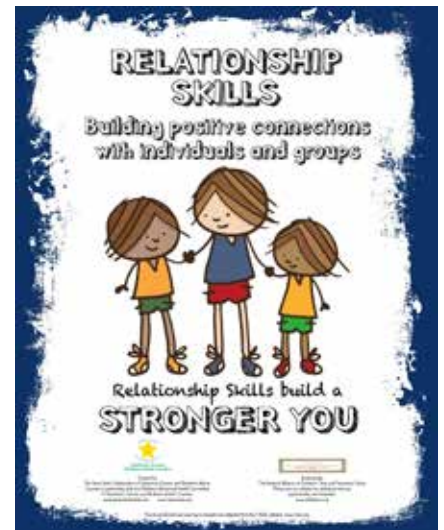
## **Social Security**

(800) 772-1213  
308 State St., Petoskey, MI 49770  
[www.socialsecurity.gov](http://www.socialsecurity.gov)  
Benefits for age 65+  
Assistance for disabled persons

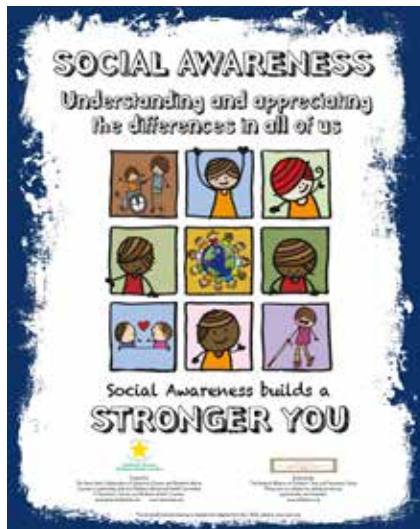




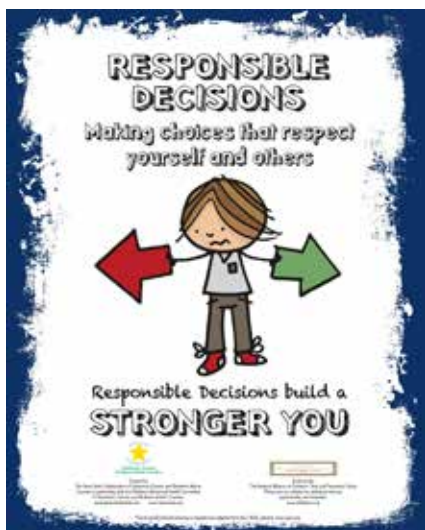
Social and Emotional Health is a child's ability to form strong relationships with others, express and manage emotions, explore the world around them and problem-solve.



Social and Emotional Skills are as important as ABC's and 1, 2, 3's. Babies need relationships with loving adults to learn these skills. Loving relationships also help babies' brains to grow and develop.



Children need help from adults to learn how to get along with others and manage their feelings. Safe and loving relationships with parents and caregivers are crucial to social and emotional health for all children.



Children that do not have social and emotional skills are less prepared to learn in school and more likely to display troubling behavior and have difficulty making friends.







## Northern Community Mediation

Where The Solution Is Up To You

Avoid the *STRESS* of going to court.

Avoid the *EXPENSE* of litigation.

Think NCM:  
**NORTHERN COMMUNITY  
MEDIATION**

Call 231.487.1771

Email [jane@northernmediation.org](mailto:jane@northernmediation.org)

Visit the NCM website  
[www.northernmediation.org](http://www.northernmediation.org)

The mission of Northern Community Mediation is to help people meaningfully resolve conflicts in Charlevoix and Emmet Counties.

PN-796604-1

# Petoskey

DISTRICT LIBRARY

500 E Mitchell St

[www.petoskeylibrary.org](http://www.petoskeylibrary.org) 231.758.3100

**WE ARE OPEN 7 DAYS A WEEK!**

**Monday–Thursday 10am–7pm**

**Friday & Saturday 10am–5pm**

**Sunday 12pm–5pm**

.....  
Programs for all ages  
Meeting rooms available for reservation  
Digital collections  
**Nurture Knowledge, Drive Discovery,  
Connect Community.**

# Boyne Falls Preschool



"Located at Boyne Falls Public School"

Offering High Quality  
Early Childhood  
Education to Families  
of 3-5 year olds.

~~~~~  
Five-star  
Quality Rating  
by Great Start  
to Quality



**(231) 549-2211 ext. 510**

 [@boynefallspreschool](https://www.instagram.com/boynefallspreschool)

PN-808631-1



# PROFESSIONAL OPTICAL

**Burns Professional Building  
Petoskey**

OPTICIANS

David Dziak • Allen Rosinski  
M-F 8:30-5:30 Sat. 9:00-Noon

**(231) 487-0171**

[www.professionaloptycalpetoskey.com](http://www.professionaloptycalpetoskey.com)

PN-816489-1

# EARLY HEAD START

Now recruiting Pregnant Women  
and Children Birth to Three



nmcaa

Head Start/Early Head Start



Early Head Start is a home visiting program designed to support you as your child's first and most important teacher! Families with children of all abilities are encouraged to apply. Call to hear about how this program can benefit your child and family!

Please call Jeanette Hibbler for further information or to schedule an application appointment: 231- 548-2261 ext 1206

Playgroups are also offered monthly!

# HOUSING & UTILITY ASSISTANCE



**If you are homeless or experiencing a housing crisis, please call (844) 900-0500 for assistance.**

## **Definition of Homeless according to McKinney-Vento Legislation:**

The law says that a child or youth without a fixed, regular and adequate residence is homeless. It does not matter how long the child or youth has been without a home. It also does not matter if the child or youth is living with a parent or is separated from parents. Under the Act, students are homeless if they are:

- Living with a friend, relative or someone else because they lost their home or can't afford a home
- Staying in a hotel or motel
- Living in an emergency or transitional shelter or a domestic violence shelter
- Staying in substandard housing
- Living in a car, park, public place, abandoned building or bus or train station
- Awaiting foster care placement
- Living in a campground or an inadequate trailer home
- Abandoned in a hospital; or living in a runaway or homeless youth shelter

## **Homeless Liaisons for Char-Em ISD:**

Alanson: Dean Paul (231) 548-2261

Beaver Island: Judith Gallagher  
(231) 448-2744x301

Boyne City: Mary Hickman  
(231) 439-8256

Boyne Falls: Melissa McGuiness  
(231) 549-2211

Central Lake: Mary Spyhalski  
(231) 544-3141

Char-Em ISD: Tory Thrush  
(231) 582-8070

Charlevoix: Travis Garrett (231) 547-8159

Charlevoix-Montessori: (231) 547-9000

## **Northwest Michigan Habitat for Humanity**

(231) 348-6926, [www.northwestmihabitat.org](http://www.northwestmihabitat.org)

1840 M119, Harbor Springs, MI 49740

Homeownership Program: Offers

opportunity for homeownership to people whose income is 30%, or at least \$20,000 (whichever is greater), to 60% of the area's median income. An applicant's credit does

not need to be perfect, nor have a certain credit score at the beginning.

We have Housing Counseling and Education classes available. Individuals and families qualify based on level of need, income, location, and their willingness to partner with Habitat.

Home Repair Program: Offers interior, exterior and landscaping repairs on a 0% interest loan for qualified individuals who own their own home. Applicant income must fall between 30-60% of the area's median income. Eligible repairs can

include roofs, structural damage, porch repair, electric, plumbing, HVAC, handicap accessibility, siding, painting, weatherization, and energy efficiency. If you have a repair outside of these items, please call for additional information.

ReStore: Offers reusable household goods and building products at a discount.

## **Joppa House Women's Transitional Home**

(231) 547-8040 or (231) 330-2643

PO Box 174, 801 State St.,  
Charlevoix, MI 49720

<http://joppahouseministries.org>

Joppa House, a sister ministry of Third Day Fellowship & Outreach is a faith-based transitional home for women and children who are homeless or facing homelessness.

*Residency is through an application and interview process.*

*Contact the office or visit our website for more information.*

## **Nehemiah Project**

(231)347-0363 Ex.0

Homeless Shelters – two facilities located in Petoskey. For housing, first call the intake line at (844) 900-0500.

Nehemiah House (For men)

(231) 347-0363 Ex 2

36 Bridge St., Petoskey, MI 49770

Mary Margaret House (For women and children)

(231) 439- 5667 Ex 3

40 Bridge St., Petoskey, MI 49770

## **Northern Homes Community Development Corporation**

(231) 582-6436

P.O. Box 86, 1048 E. Main St.,  
Boyne City, MI 49712

Provide Financial and Homebuyer Education Workshops

Provide foreclosure prevention services

Help families to purchase and rehab a home with down payment and closing cost assistance and loan/grant funds to rehabilitate the home after purchase

Provide affordable rental apartments at Maple Village Apartments in Petoskey  
Income based senior housing at Meredith Manor in East Jordan

## **Northwest Michigan Community Action Agency**

(231) 347-9070

(800) 443-5518

2240 Mitchell Park Dr., Unit A,  
Petoskey, MI 49770

[www.nmcaa.net](http://www.nmcaa.net)

Child Development: Early Head Start (0-3 years); Head Start (3-5 years); MI School readiness (4 years old)

Community Education: Financial Fitness Workshops, Energy Conservation Instruction, Information and Referral: Homeownership Counseling and Education:

Budget counseling/credit repair  
Free tax preparation

Housing: Affordable Housing Development, Home repair and Rehabilitation, weatherization, homeownership programs

Monthly and Quarterly Food Distributions, Staples for Income-Eligible Residents at local distribution sites



# HOUSING & UTILITY ASSISTANCE

Asset Building programs: Individual Development Accounts Section 8 Family Self-Sufficiency Program  
Emergency Services: Advocacy and Case Management for Homeless, Limited Crisis Payment for Heating and Utilities Foreclosure and Eviction Prevention Assistance  
Community Connections: Fatherhood Initiative, Meals on Wheels-Keep the Wheels Rolling Fundraiser, Numerous Community Partnerships

## Salvation Army

(231) 347-3531  
712 Pleasant St., Petoskey, MI 49770  
www.sapetoskey.org  
Emergency Financial Assistance:  
Rent, Utility, Disaster, Holiday;  
Children's Programs: After school, Watermelon parties, Field trips, Summer camp, Adventure Corps  
Pantry: Mon-Fri 9-11 a.m.

Community Dinners: Fri at 6 p.m.  
Ministry Services: Sunday school 10 a.m., Sunday worship 11 a.m., Luncheons, Prayer meetings, Tea parties, Bible study, Adult and Senior camps, Book club, Youth activity group for teens.  
Thrift Store: Mon-Sat 9 a.m. - 5 p.m., 1615 Clarion Avenue (231) 347-8500.

## Third Day Fellowship Womens' Emergency Shelter

(231) 547-8040 or (231) 330-2643  
PO Box 174, 104 State St., Charlevoix, MI 49720  
www.3dfellowship.org  
Seasonal emergency shelter for women from November 1st

## TrueNorth Community Services

(231) 355-5880  
6308 S. Warner Ave., Fremont, MI 49412  
www.truenorthservices.org  
Heat and energy assistance for income eligible individuals and families.  
May call or go online for an application.

## Additional Housing & Utility Assistance Resources:

*Department of Health and Human Services (see Government & Legal Services)*  
*Little Traverse Bay Bands of Odawa Indians (see Native American Services)*  
*Women's Resource Center of Northern Michigan (see Counseling & Crisis Services)*

# NATIVE AMERICAN SERVICES

## Little Traverse Bay Bands of Odawa Indians

www.lttbodawa-nsn.gov  
(231) 242-1400  
7500 Odawa Circle, Harbor Springs, MI 49740

### Human services:

|                                       |                                                             |
|---------------------------------------|-------------------------------------------------------------|
| Protective [Adult and Child] Services | Natural Resource Department and Environmental Protection    |
| Foster Care/Adoption                  | Health Clinic                                               |
| Foster Home Licensing                 | Dental Clinic                                               |
| Family Preservation                   | Gijigowi-Bib Skaa Bi Me                                     |
| Low Income Energy Assistance          | Human Resources                                             |
| Community Service Block Grant         | Mental Health and Substance Abuse                           |
| Childcare Assistance                  | Communications                                              |
| Burial Fund                           | Housing Department                                          |
| USDA-Food Distribution Program        | Tribal Court                                                |
| Hearing Aid Assistance                | Tribal Law Enforcement                                      |
| Survivor Outreach Services            | Elder's Department                                          |
| Youth Services                        | Maternal Child Health – Healthy Start/Family Spirit Program |

## Department of Civil Rights

(517) 335-3165

## Michigan Indian Legal Services

(800) 968-6877





# SUPPORT GROUPS

## **Divorce Care**

www.divorcecare.org,  
Free encouragement e-mails; 13-week group using DVDs & discussion to help those who are separated or divorced. See website for information on local groups.

## **Financial Peace University**

www.daveramsey.com/fpu  
9-week course to help people take practical steps towards greater peace with their finances. See website for information on local groups.

## **Grief Share**

www.griefshare.org  
Free encouragement e-mails; 13-week group using DVDs & discussion to help those who are grieving the loss of a loved one. See website for information on local groups.

## **Single & Parenting**

www.singleandparenting.org  
Help center resources; 13-week group using DVDs & discussion to help single parents and grandparents. See website for information on local groups.

## **Al-Anon Club of Charlevoix**

(231) 675-9184  
www.charlevoixalano.org  
For meeting schedule please visit website

## **Disability Beyond Barriers**

Third Fridays at 11:00am  
820 Arlington Avenue, Petoskey  
Contact Info: Faith (231) 347-9325  
Disability Network:  
(231)-922-0903 or (866) 869-8600

## **Friendship Centers of Emmet County Council on Aging Alzheimer's Disease/**

**Dementia Support**  
Second Wednesdays 2-3:30 p.m.  
Petoskey Library

## **Caregiver Support**

Fourth Thursdays 1:30-3 p.m.  
Petoskey Library

## **Low Vision Support**

First and Third Wednesdays  
11:30am-1:00pm  
Petoskey Library

## **Parkinson's Support**

Fourth Wednesdays 2-3:30 p.m.  
Petoskey Library

## **Adult Grief Support**

First Tuesdays 6:30 p.m.  
Community Reformed Church, Charlevoix  
Second Tuesdays 6:30 p.m.  
Greenwood Cemetery Office Bldg.  
Community Room, Petoskey

## **Teen Grief Support (Ages 13-17)**

Monthly in Charlevoix  
Call office, (231) 547-7659 for information. Parental consent is required for participation.

## **McLaren Northern Michigan The Compassionate Friends, Safe Harbor Chapter**

Third Mondays 7-8:30 p.m.  
First Presbyterian Church  
501 E. Mitchell, Petoskey  
(231) 487-4825  
This self-help support group, staffed by those who have suffered similar losses, is especially created for those grieving the death of a child. Parents, grandparents, and siblings can benefit from this non-denominational organization.

## **Grief and Loss Support Group**

Every Thursday 1-2:30pm and  
Third Thursdays 5-6:30 p.m.  
1 Hiland Drive, Petoskey  
(231) 487-5643

## **Diabetes Support Group**

Second Mondays 7-8 p.m.  
820 Arlington Avenue, Petoskey  
(231) 487-3118

## **MS Support Group**

Third Wednesdays 6:30-8 p.m.  
(no meetings Jan or Feb)  
820 Arlington Ave., Petoskey  
(231) 439-0973

## **Cancer Support Group**

Thursdays 6-7:30 p.m.  
820 Arlington Ave., Petoskey  
(231) 487-4015 or  
acherry@northernhealth.org

## **Cancer Caregivers Support Group**

Second and Fourth Thursdays 6-7:30 p.m.  
820 Arlington Ave., Petoskey  
(800) 248-6777

## **Stroke and Brain Injury Support Group**

Second Tuesdays 6-7:30pm  
Contact in advance for location  
(231) 549-1388 or gmcclgunn@charter.net  
Contact in advance for location. A safe environment for survivors of traumatic brain injury or stroke. Patients and caregivers share challenges and learn in a compassionate setting.

## **Survivors of Suicide Loss Support Group**

Second Tuesdays 6:30-8 p.m.  
Even months: 1 Hiland Drive, Petoskey  
Odd Months: 411 E. Division St., Boyne City

## **Just For Us Support Group**

First Tuesdays 6:30-8:30 p.m.  
820 Arlington Avenue, Petoskey, MI  
(231) 347-5136  
This support group provides a support network and information to help women through the diagnosis and treatment of breast cancer and a support system for women with all other cancers.

## **Northern Michigan Autism Association Family Support Group**

Third Wednesdays 5:30-7 p.m. (Subject to cancellations for holidays etc.)  
820 Arlington Ave., Petoskey  
(231) 330-5757 or  
www.northernmichiganautism.org

## **Support Groups for Survivors of Domestic Abuse**

Support groups are for past or present abuse survivors. Survivors meet with a Women's Resource Center counselor before attending their first group.  
Petoskey: Mondays at 6pm (231) 347-0082  
Mancelona: Wednesdays at 10 a.m.  
(231) 587-8891  
Gaylord: Wednesdays at 1 p.m.  
(989) 731-0918  
For more info call the group location directly

## **West Michigan Alcoholics Anonymous District 13**

(231) 348- 5005  
Email: info@wmaad13.org  
www.wmaad13.org  
For meeting schedule please visit website

# PHILANTHROPY & VOLUNTEERISM

## **Char-Em United Way**

(231) 487-1006

www.ceuw.org, info@ceuw.org

Char-Em United Way provides support to local programs addressing individual and family needs, in coordination with local non-profit agencies. Char-Em United Way provides funding for 211, preschool scholarships, Imagination Library books, after school programs, Big Brothers/Big Sisters, and foster grandparents, among many other wonderful programs.

United Way does not provide financial assistance to individuals, but works with other agencies to improve the lives of people in Emmet and Charlevoix Counties. We bring people together to work on community problems such as public transportation and affordable housing, and affordable or available childcare.

## **Dolly Parton's Imagination Library,**

a project of Char-Em United Way, is a service free for families. The Imagination Library mails a book each month to any child in Charlevoix and Emmet Counties under the age of five and registered for the program. Children are registered by parents, daycare providers, and through other community agencies that work with young children. This program encourages early literacy, a determinant of future school and life success.

**FamilyWize**, is a prescription discount card provided by Char-Em United Way. These cards are saving people in Charlevoix & Emmet counties money every day. People save money on prescriptions, over two hundred fifty thousand dollars in an average year! To get a card or learn more call (231) 487-1006.

## **Charlevoix County**

### **Community Foundation**

(231) 536-2440, www.c3f.org

PO Box 718, 301 Water St.,  
East Jordan, MI 49727

Mission Statement: "To enhance the quality of life in Charlevoix County, now and for generations to come, by building permanent charitable endowment from a wide range of donors, addressing needs through grant making, and providing leadership on matters of community concern."

## **Petoskey-Harbor Springs Area**

### **Community Foundation**

(231) 348-5820

616 Petoskey St.,  
Suite 203,  
Petoskey, MI 49770  
www.phsacf.org

Mission Statement: "To improve the quality of life to all people of Emmet County, by:

Connecting donors with community needs; Building a permanent source of charitable funds to serve our area; Addressing a broad range of community issues through innovative grant-making; Championing philanthropy and active citizenship."

## **Additional Philanthropy & Volunteerism Resources:**

*American Red Cross (see Counseling & Crisis Services)*  
*Hospice (see Health Services)*  
*Northwest Michigan Habitat for Humanity (see Housing & Utility Services)*  
*Women's Resource Center of Northern Michigan (see Counseling & Crisis Services)*





## The Area Agency on Aging of Northwest Michigan

(800) 442 1713 or (231) 947-8920  
1609 Park Dr., Traverse City, MI 49686  
www.aaanm.org

Information and Assistance, Options Counseling, Medicare/Medicaid Assistance Program, MI Choice Waiver Program, Care Management Program, Healthy Aging Programs such as Personal Action Toward Health classes for diabetes, chronic illness and pain, Fall prevention programs, Caregiver training and support.

## Charlevoix County Commission on Aging

(231) 237-0103  
218 W. Garfield Ave.,  
Charlevoix, MI 49720  
www.charlevoixcounty.org

Congregate Meals at Senior Centers in Boyne City, Charlevoix and East Jordan  
Dining Out Meal Program on Beaver Island  
Home Delivered Meal Programs throughout the County  
In-home Respite, Homemaking and Personal Care  
Monthly Foot Care Clinics at each Senior Center and in-home for homebound seniors  
Medicare D Counseling  
Information and Referral  
Socialization and Activities at each Senior Center  
Seniors Ride Free (Charlevoix County Transit) 60 + Charlevoix Residents

## Friendship Centers of Emmet County Council on Aging

(231) 347-3211 or (888) 347-0369  
1322 Anderson Rd., Petoskey, MI 49770  
www.emmetcoa.org

Transportation; Congregate meals at senior centers in Brutus, Petoskey, and Pellston; Meals on Wheels; Retired Senior Volunteer Program; In-home Homemaker, Personal Care and Respite Care; Medicare Medicaid Assistance Program; Hearing tests and blood pressure screening; Eyeglass adjustments; Foot care at senior centers and in-home for homebound seniors; Massage therapy; Fitness programs; Support groups: Low Vision, Alzheimer's, Parkinson's, and Caregivers; Senior Project Fresh; Durable medical equipment loan closet; Senior Essential Needs Fund; Information and Referral; Computer Assistance; Activities and Special Events.

## Senior Centers and Meal Site Locations

Beaver Island Community Center  
26466 Donegal Bay Rd.  
Beaver Island, MI 4978  
(231) 448-2022

Boyne Area Senior Center  
411 E. Division St.  
Boyne City, MI 49712  
(231) 582-6682

Charlevoix Senior Center  
06906 Norwood Rd.  
Charlevoix, MI 49720  
(231) 547-5361

East Jordan Community Center  
951 Mill Street  
East Jordan, MI 49727  
(231) 536-7831

Huber Senior Center  
6436 E. Brutus Rd.  
Brutus, MI 49706  
(231) 529-8803

Petoskey Senior Center  
1322 Anderson Rd.  
Petoskey, MI 49770  
(231) 347-3211

Pellston Senior Center  
6274 W. Edgar  
Pellston, MI 49769  
(231) 539-8201

## McLaren Adult Day Services

(231) 348-0771  
One Hiland Dr., Petoskey, MI 49770  
www.vitalcare.org  
Caregiver Respite- ability for caregiver to take a break, run errands, work, etc. Alternative to nursing home placement for the client- daytime program  
Nursing and personal care  
Social and physical activities  
Transportation to and from the Center  
Nutritional snacks and meals  
Scholarships available

## Bay Bluffs - Emmet County Medical Care Facility

(231) 526-2161  
www.baybluffs.org  
Bay Bluffs - Emmet County Medical Care Facility is a place close to home where people of all ages come together in a caring environment. We provide many services from short-term rehabilitation to long-term resident care.

## Villa at the Bay

(231) 344-6600  
www.villaatthebayhc.com  
Nursing home and assisted living facility.

## Grandvue Medical Care Facility

(231) 536-2286  
www.grandvue.org  
Offering person-centered long-term care, memory care and short term rehabilitative care

## Boulder Park Terrace

14676 Upright St.  
Charlevoix, MI 49720  
(231) 547-1005

## Hospice Services: Please turn to the Health Services section

### Additional Aging Service Resources:

*Department of Health and Human Services (see Government, Legal, Services)*  
*Little Traverse Bay Bands of Odawa Indians (see Native American Services)*  
*Disability Network of Northern Michigan (see Disability Services)*



# DISABILITY SERVICES

## Disability Network/Northern Michigan

(866) 869-8600

415 E. Eighth St., Traverse City, MI 49686

[www.disabilitynetwork.org](http://www.disabilitynetwork.org)

Our mission is to promote personal empowerment and positive social change for people with disabilities. We serve individuals with any type of disability, addressing the needs of the whole person to achieve a more balanced life. We provide assistance with housing, employment, transportation, education/transition, accessibility, long term supports, advocacy, and peer support. We also partner with businesses, governments, and other organizations to address issues with housing, transportation, employment, and accessibility.

## Michigan Rehabilitation Services (MRS)

(877) 901-9179 Toll Free or (231)-348-1620

2229 Summit Park Drive Petoskey, MI 49770

<http://www.michigan.gov>

Michigan Rehabilitation Services (MRS) partners with individuals and employers to achieve quality employment outcomes and independence for individuals with disabilities. MRS assists persons with disabilities to prepare for, find, and keep a job.

## Michigan Alliance for Families

(800) 552-4821

[www.michiganallianceforfamilies.org](http://www.michiganallianceforfamilies.org)

Michigan Alliance for Families provides information, support, and education to families of children and young adults with disabilities and special education needs, from birth to age 26. The Alliance also helps parents to become more active in their child's school as a way of improving educational services and outcomes, while helping parents understand the rights of their children and to effectively communicate and advocate for their children's needs. Connect with Michigan Alliance for Families to if you have a question about your child's special education program, want to talk to another parent, or are interested in finding a workshop near you. [info@michiganallianceforfamilies.org](mailto:info@michiganallianceforfamilies.org)

## Bergmann Center, Inc

(231) 547-2979

08855 Martin Rd., Charlevoix, MI 49720

[www.bergmanncenter.org](http://www.bergmanncenter.org)

The Mission of Bergmann, Inc. is to provide services that enable individuals with mental and physical challenges the opportunity to become active involved members of the community.

## Additional Disability Service Resources:

*Aging and Disability Resource Collaborative of Northwest Michigan (see Aging Services)*

*Department of Health and Human Services (see Government & Legal Services)*

*Northwest Michigan Habitat for Humanity (see Housing & Utility Assistance Services)*

*North Country Community Mental Health (see Counseling / Crisis Services Services)*

*Veterans Affairs (see Veteran's Services)*

## BOYNE DISTRICT LIBRARY

*A great place for Kids!*

Come explore our hands-on mural and put on a show in our puppet theater!

### Books for Birthdays

Kids, come to the library on your birthday and we'll give you a new book!

Free activities:

### Story time

**Every Tuesday morning at 10 a.m.**

For preschoolers and their siblings  
Crafts, songs, stories and fun

### Toddler Tales and Tunes

**Every Monday at 9:30 a.m.**

For ages 0-3 and their caregivers;  
fun songs and interactive stories.

For more information, contact the library at

[www.boynelibrary.org](http://www.boynelibrary.org) or

231-582-7861,

and like us on Facebook.



PN-804045-1

  
**Commission  
on Aging**

*Serving Seniors in Charlevoix County*

Senior Center Meal Sites, Boyne City, East Jordan, Charlevoix and  
"Dining Out" on Beaver Island

*"Serving Seniors in Charlevoix County"*

**CHARLEVOIX COUNTY COMMISSION ON AGING**  
218 W. Garfield Ave. • Charlevoix, MI 49720 • 231-237-0103

- Homemaking
- Personal Care
- Foot Care
- Respite
- Home Delivered Meals

PN-819198-1



# TRANSPORTATION SERVICES

## Charlevoix County Transit

(231) 582-6900  
www.charlevoixcounty.org/county\_transit  
Charlevoix County Transit provides safe, affordable and friendly demand-response public transportation for Charlevoix County residents.

## Straits Regional Ride (Emmet County)

(231) 597-9262 or (231) 597-0175  
Toll Free (866) 731-1204  
Fax # (231) 597- 0178  
Monday – Friday 6am-5pm  
www.cheboygancounty.net/straits-regional-ride-100/  
Straits Regional Ride provides services in Cheboygan, Emmet and Northern Presque Isle Counties. Buses run flexible routes within many communities along the way and will pick up or drop off at your front door. Please call 24 hours in advance to find out times and locations of routes in your community.

## Emmet County Transit - EMGO

The EMGO/SRR bus service currently operates five days a week, Monday through Friday. Buses run from Petoskey, Mackinaw City, Harbor Springs to multiple locations in Emmet County with flexible routes within many communities along the way.  
FOR INFORMATION, CALL DISPATCH  
Monday through Friday, 6 am – 5:30 pm  
231-597-9262 or 231-597-0175  
Toll Free: 1-866-731-1204  
https://www.emgoride.org

## Additional Transportation Service Resources:

*Friendship Centers of Emmet County Council on Aging (see Aging Services)*

# VETERAN SERVICES

**American Legions:** www.legion.org

## Patriot's Place

(989) 448-2260  
www.goodwillnmi.org/homeless-housing/patriot-place  
Patriot Place is Northern Michigan's only Veterans Transitional Housing Community for male veterans who are experiencing homelessness. Unlike a temporary emergency shelter, veterans in need will have the opportunity to live independently with support services for up to two years.

## Veteran's Affairs

One stop resource for information for veterans on benefits and assistance, health and medical assistance, and education and work resources.

## Charlevoix County

Director John Hess  
(231) 547-7220, www.charlevoixcounty.org

## Emmet County

Director Rick Wiertalla  
(231) 348-1780, www.emmetcounty.org

## Veterans Justice Outreach

(989) 732-7525 ex. 15235  
Healthcare for homeless veterans.

## Veterans Crisis Lines

**Veterans Crisis Hotline:** (800) 273-8255 Press 1

**Veterans Crisis Line Text:** Text to 838255

**Veterans Chat Line:**

www.veteranscrisisline.net/ChatTermsOfService.aspx  
The Veterans Crisis Line connects veterans in crisis and their families and friends with the Department of Veterans Affairs responders through a confidential toll-free hotline, online chat, or text.

## Veterans of Foreign Wars:

www.vfw.org  
**Boyer City** (231) 582-3447

## Tragedy Assistance Program for Survivors (TAPS)

24 Hour Grief Helpline: (800) 959-8277  
www.taps.org/survivors  
TAPS offers compassionate care to all those grieving the death of a loved one serving in our Armed Forces by providing comfort and hope through a national peer support network and connection to grief resources, all at no cost to surviving families and loved ones.

## Additional Veteran Service Resources:

*Disability Network of Northern Michigan (see Disability Services)*  
*Northwest Community Action Agency (see Housing & Utility Assistance Services)*  
*American Red Cross (see Counseling & Crisis Services)*  
*Hospice (see Health Services)*

stand UP for kids

DONATE TO THE CHILDREN'S TRUST FUND ON YOUR MICHIGAN TAX FORM 4642.

Child Abuse Prevention & Education Council  
Serving Charlevoix and Emmet Counties

**CHILD ABUSE PREVENTION AND EDUCATION COUNCIL**

P.O. Box 414, Petoskey, MI 49770  
www.upnorthchildabusecouncil.org

Prevent Child Abuse Michigan  
Children's Trust Fund  
Protecting Michigan's Children

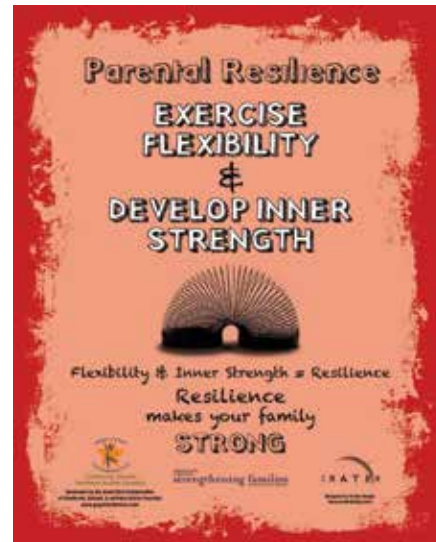
800-CHILDREN MICHIGAN.GOV/CTF HELP PREVENT CHILD ABUSE AND NEGLECT.

PN490889-1-1

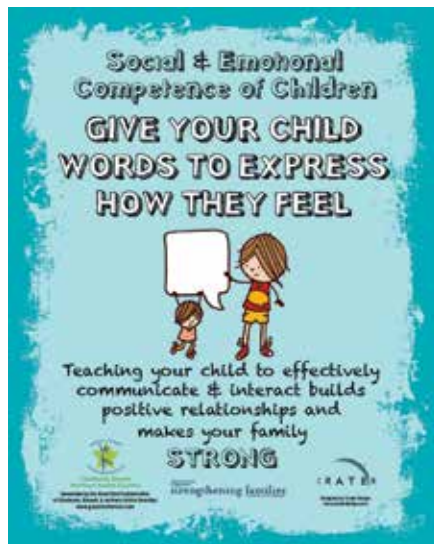
# Protective Factors



Parents have a lot to juggle! Remember that asking for help and getting the resources your family needs buffers your child from stress and allows them to reach their potential.



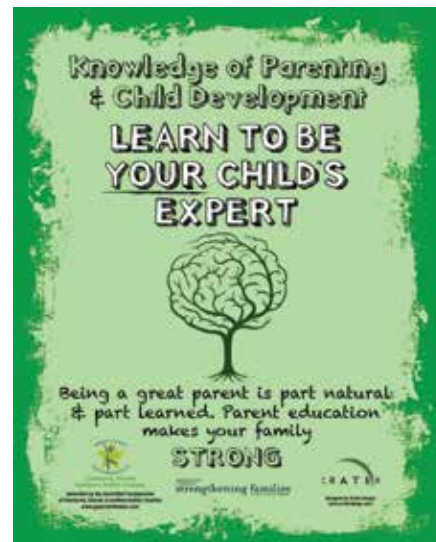
Parent connections allow you to learn from each other, share the joys and frustrations of parenting, and receive concrete supports!



“It’s not only children who grow. Parents do too. As much as we watch to see what our children do with their lives, they are watching to see what we do with ours.”



Seek information on how to help your child stay safe and reach their potential. Charlevoix, Emmet & Northern Antrim Counties are rich with opportunities for parents to learn from experts and each other.



# MANY NEEDS. ONE NUMBER.

GET CONNECTED TO THE HELP YOU NEED... QUICKLY, EASILY AND CONFIDENTIALLY.

When there's a crisis, where do you turn? If it's a life-threatening emergency, you call 911. But what if you can't pay your electric bill? Or you need childcare? Or legal help? Now you call or text 211.

United Way has partnered with area organizations and companies who offer free or discounted social services to provide you a fast, easy way to get the specific help you need...as quickly as possible!

## WHY 211?

- **IT'S FREE** - Just call or text and you talk to a real person who will connect you to real answers.
- **IT'S FAST** - Just by calling or texting, you're quickly connected to the help you need.
- **IT'S COMPREHENSIVE** - 211 has partnered with virtually all area companies and organizations offering social services...so you get the answers you need.
- **IT'S CONFIDENTIAL** - You never have to provide your name...just your zip code.
- **IT'S NATIONWIDE** - 211 is a national service so you can even offer help or support to others around the country.



CALL 211 TO GET CONNECTED  
TEXT YOUR ZIP CODE TO 898211

**2.1.1**

**CALL-211.ORG**

