

Head Start and Early Head Start



ANNUAL REPORT PROGRAM YEAR 2021–2022

The Northwest Michigan Community Action Agency Head Start

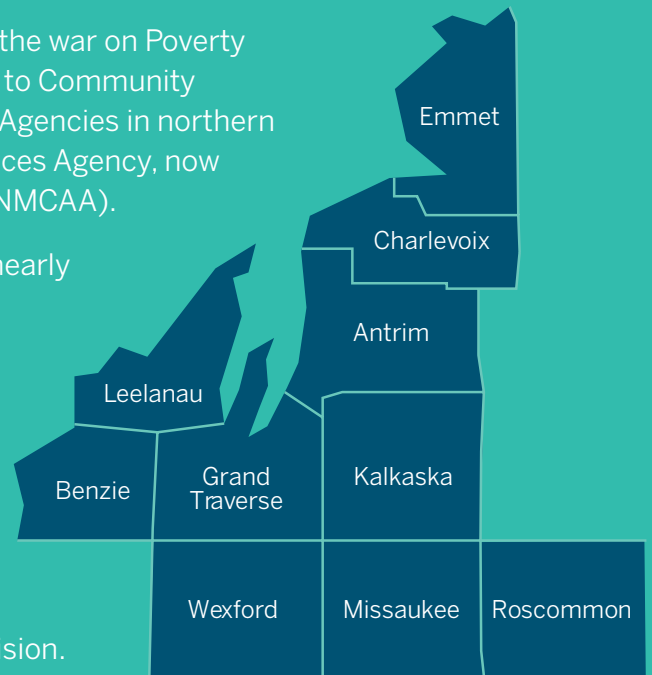
About NMCAA

In 1964, President Lyndon Johnson's administration waged the war on Poverty and passed the Economic Opportunity Act which gave birth to Community Action in the United States. In 1974, two Community Action Agencies in northern Michigan merged to form Northwest Michigan Human Services Agency, now known as Northwest Michigan Community Action Agency (NMCAA).

There are 30 Community Action Agencies in Michigan and nearly 1,000 across the country. Like NMCAA, most are private non-profit companies.

Throughout the agency's 44-year history, NMCAA has remained dedicated to strengthening communities through helping individuals and families achieve greater economic security. This is accomplished by assisting residents in solving community problems as well as meeting their individual needs through case management counseling, advocacy, group participation, and service provision.

NMCAA serves the following ten counties: Antrim, Benzie, Charlevoix, Emmet, Grand Traverse, Kalkaska, Leelanau, Missaukee, Roscommon and Wexford.



This program helped not only myself as a first time mom, but my child so much. It has showed both of us how one activity could teach so many things, help with brain development, and motor skills. I will always be grateful for this program and the opportunity.



Mission Statement

Helping people by linking services, resources and opportunities.

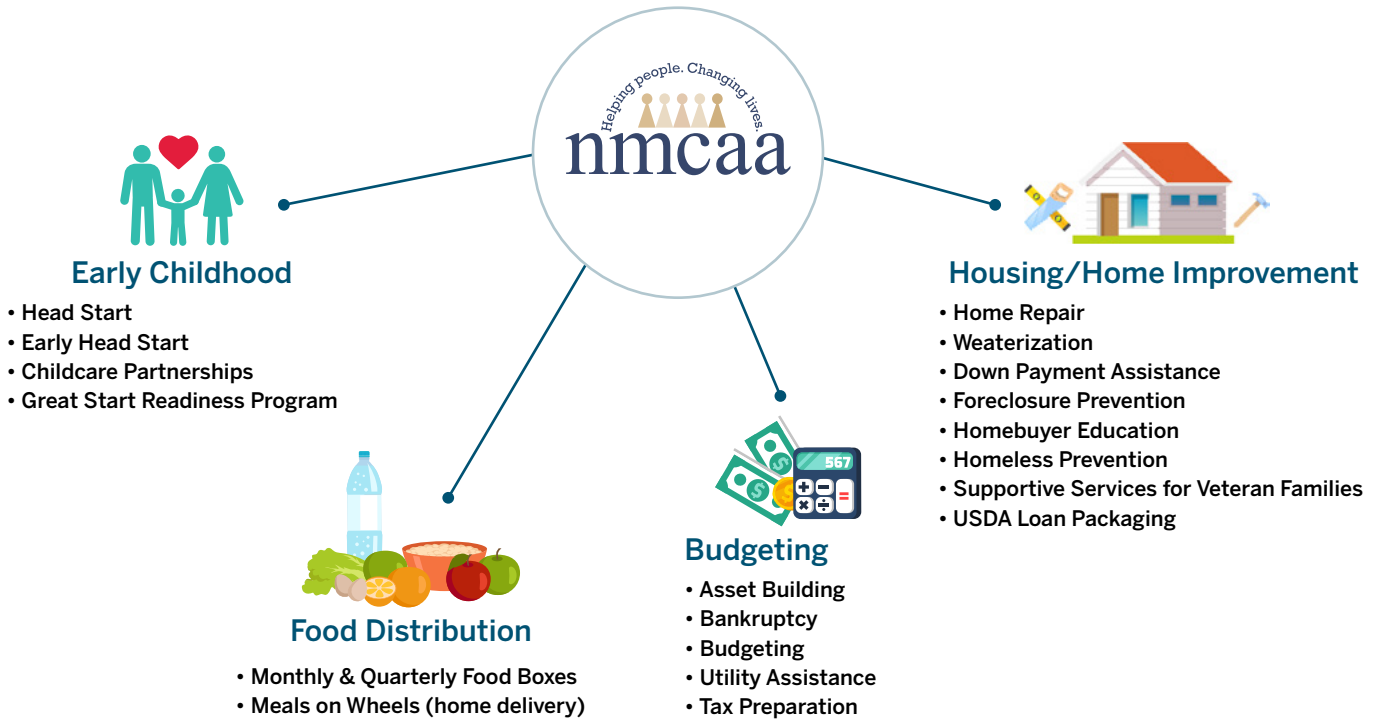
Vision Statement

NMCAA leads in strengthening communities by empowering individuals to overcome barriers, build connections, and improve their quality of life.

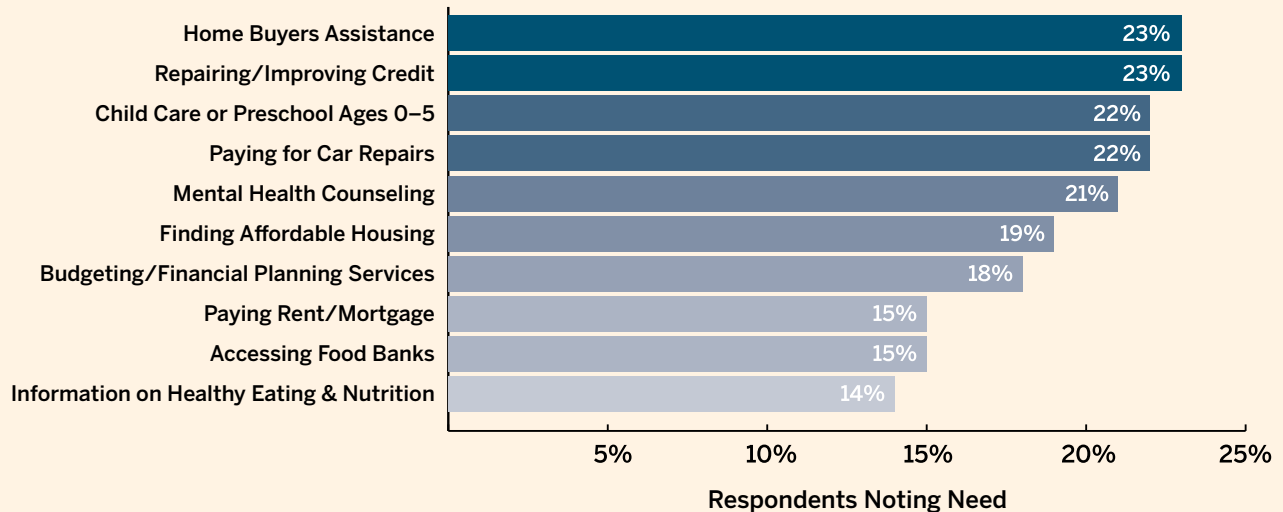
Community Needs Assessment

A complete needs assessment for Northwest Michigan Community Action Agency was last conducted in December 2021. A full copy of the report can be found on our agency website: www.nmcaa.net.

NMCAA Early Childhood Programs is just one program under the NMCAA Community Action Agency umbrella that supports families in obtaining resources and realizing their goals.



Snapshot of Community Needs throughout the NMCAA Service Area



Our Philosophy

We believe that children need strong families in order to develop into mature adults who are productive members of society. **Our goal is to nurture families.** We will seek whatever support is available and advocate for what is needed to enable the children in each family to be successful in school and beyond.



The relationships my son made with the students and teachers has helped prepare him for going into kindergarten.

Program Options

NMCAA Early Childhood Programs recognize that families' needs may differ. Therefore, we offer a variety of service options.

Program Option	Part Day Center Based Classrooms	Extended Day Center Based Classrooms	Head Start Collaborative Centers (partnerships with local childcares)	Early Head Start Center Based Classrooms	Early Head Start Collaborative Centers (partnerships with local childcares)	Early Head Start Home Based Services
Typical Service Months	September–May	September–June	September–mid August	September–mid August	September–mid August	Year Round
Child Contact Hours	4 days per week, 4 hours per day	4 days per week, 6–7 hours per day	48 weeks, children are offered care up to 10 hours per day	46 weeks, 6 hours per day	48 weeks, children are offered care up to 10 hours per day	46 weekly home visits per year
Parent Contacts	4 in the form of home visits and parent/teacher conferences					24 Socialization Experiences

Enrollment

Overview of the 2021–2022 School Year

Average Monthly Funded Enrollment:

Head Start – 654
Early Head Start – 337

Average Monthly Enrollment:

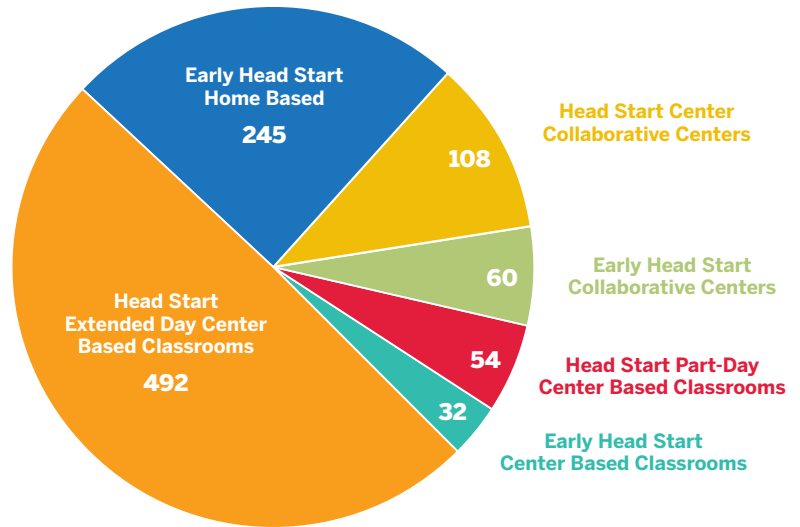
Head Start – 568 (87% of funded enrollment)
Early Head Start – 273 (81% of funded enrollment)

Total Number of Children Served:

Head Start – 678
Early Head Start – 423
EHS Expectant Women – 15

Total Number of Families Served:

Head Start – 622
Early Head Start – 389



NMCAA Early Head Start and Head Start Programs are funded to serve 991 children each year. Average 2022 enrollment was lower than funded enrollment, due to the COVID 19 Pandemic. Head Start numbers are reflective of September 2021–May 2022, when all Head Start programs are in operation. Early Head Start numbers are reflective of September 2021–August 2022, since all Early Head Start program options operate year-round.

Percentage of Eligible Children Served (program year 2021–2022)

Michigan Kids Count data for 2021 estimated that there were 2,933 children under the age of 5, in the Northwest Michigan 10 county region, with family income levels at or below 130% of Federal Poverty Guidelines. Estimated % of eligible children served by NMCAA Head Start and Early Head Start Programs – 33.79%.

County	Eligible Children*	Children Served in Head Start	Children Served in EHS Center Based	Children Served in EHS Home Based	Total Children Served in HS and EHS	Percent of Eligible Children Served in HS and EHS**
Antrim	211	47	12	20	79	31.44%
Benzie	133	22	8	5	35	26.31%
Charlevoix	192	54	0	30	84	43.75%
Emmet	248	67	0	30	97	39.11%
Grand Traverse	669	144	24	50	218	32.59%
Kalkaska	225	41	8	20	69	30.67%
Leelanau	77	0	0	5	5	6.49%
Missaukee	217	54	0	30	84	38.71%
Roscommon	344	34	16	15	65	18.90%
Wexford	617	191	24	40	255	41.33%
Total	2,933	654	92	245	991	33.79%

*MI Kids Count Data 2022: Children Ages 0–5 Eligible for SNAP (eligibility equals 130% FPL)

** These numbers show only the percentage of eligible children served through NMCAA Head Start and Early Head Start programs and do not represent a total that includes children served through other early childhood program options in these counties.

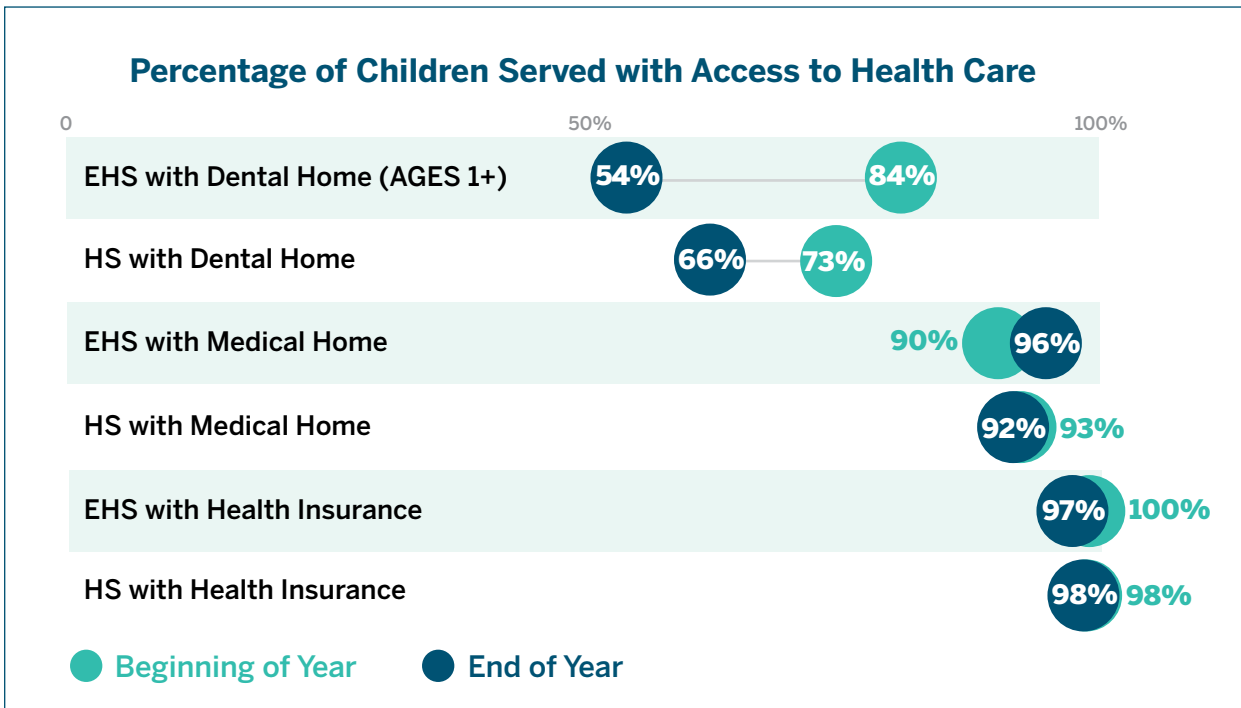
Comprehensive Approach

NMCAA recognizes the importance of the family on their child's journey to school readiness and provides a comprehensive approach to services that includes high-quality educational experiences for children, a focus on health (including physical, dental and social/emotional health) and resource/referral support to enhance overall family well-being.

Health is the foundation of school readiness!

Physical Health

Our team supports families in overcoming barriers to accessing health care for their children so that they can stay healthy and ready to learn.



Health Service Completion Rates

Up to Date on Dental Exams or Age Appropriate Oral Health Care

34%

45%

Up to Date on Age Appropriate Preventive Care

38%

66%

Up to Date on Immunizations

59%

91%

● Early Head Start ● Head Start

Family Engagement Activities

NMCAA Early Childhood Programs could not exist without the tremendous level of involvement put forth by the families of enrolled children. Participating in the program can help parents gain a better understanding of how the program is helping their child learn and grow. It also shows children that learning and school are important to their family.

Families can get involved in the program in the following ways:

Parents/Guardians have the right to make decisions about the operation of the program by:

- Becoming an active member in the Parent Committee.
- Talking with other parents and staff about the program and ways that each person can help.
- Supporting and assisting their Policy Council Representatives with center information and concerns and/or as a Policy Council Representative.

Family Engagement Activities*

Examples:

- Parent Meetings
- Parent/Teacher Conferences
- Home Visits
- EHS Socializations
- Policy Council
- Volunteer Activities
- Parent Workshops

Parent Workshops*

Offered during the 2021–2022 Program Year:

- Self-Care
- Mindfulness
- Family Game Night

* NMCAA Head Start and Early Head Start programs utilize the *Your Journey Together* Curriculum with families. Components of this curriculum are interwoven into many of our family engagement activities.

The family is the primary force in preparing children for school and life, and children benefit when all of the adults who care for them work together.

(Bronfenbrenner, 2004)

COVID-19 Impacts

As identified by our Community Needs Assessment, the COVID-19 pandemic had a profound negative impact on households in the region. Some impacts directly relate to the disease itself, but most are related to economic and social effects indirectly caused by the pandemic. In survey data, 59% of all respondents reported one or more economic impact on their households over the course of the pandemic.

During the 2021–2022 Program Year, our team worked to mitigate the impact of the pandemic on family well-being by connecting families to services to support their needs

Number of Families Connected to Service

Assistance Enrolling in Education or Job Training	11	37
---	----	----

Financial Education/Debt Counseling	11	20
-------------------------------------	----	----

Mental Health Services	43	59
------------------------	----	----

Housing Assistance	34	50
--------------------	----	----

Emergency/Crisis Intervention (food, clothing, shelter)		
---	--	--

155 197

84% and 86%

of families were connected to a service supporting family well-being.

● Early Head Start ● Head Start

High Quality Programming

The Head Start Approach to School Readiness means that **children are ready for school, families are ready to support their children’s learning, and schools are ready for children.**

Our assessment system, Teaching Strategies GOLD, is aligned to our program curriculums, the Head Start Early Learning Outcomes Framework, and state benchmarks for school readiness. These tools assist teachers and home visitors, in conjunction with parents, in designing individualized lesson plans and learning experiences to support children in growing to their fullest potential.

Program Curriculum and Assessment System Information

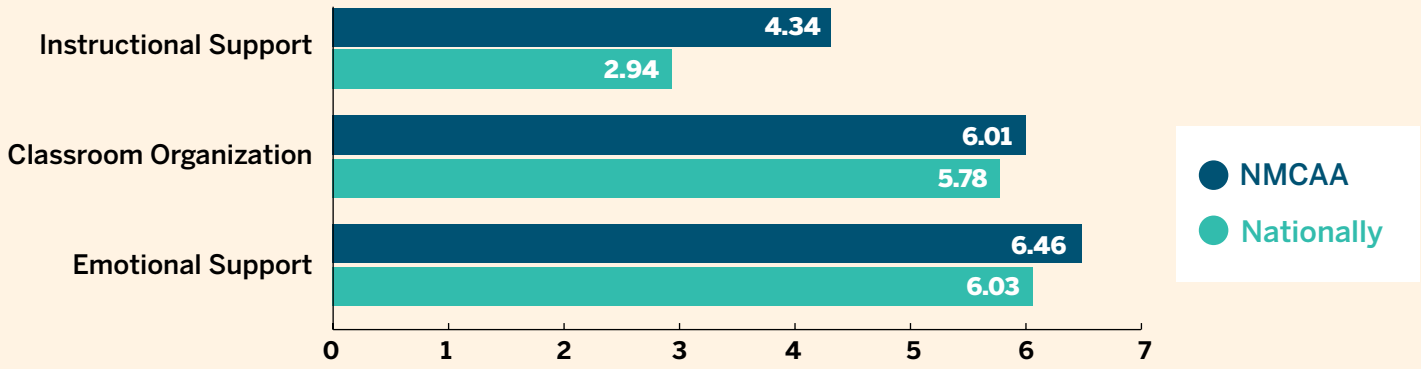
Program	Curriculum	Assessment
Early Head Start Home Based (year round programming)	Parents as Teachers <ul style="list-style-type: none"> • Supports and engages parents in their child’s development • Provides early detection of developmental delays • Helps strengthen families 	Teaching Strategies GOLD <ul style="list-style-type: none"> • Four checkpoint periods that provide a snapshot of children’s developmental progress • Fall, winter, spring, and summer
Early Head Start Collaborative Centers and Center Based Classrooms	Creative Curriculum <ul style="list-style-type: none"> • Sets the stage for learning in six developmental areas with 23 objectives • Environmentally-based approach 	
Head Start Center Based Classrooms and Collaborative Centers		Teaching Strategies GOLD <ul style="list-style-type: none"> • Three checkpoint periods that provide a snapshot of children’s developmental progress • Fall, winter, and spring

Supportive Learning Environments Promote Kindergarten Readiness

NMCAA Child Development Programs staff are committed to preparing children and their families for kindergarten. NMCAA is a step above in creating classrooms that are well organized and effective in nurturing children’s growth. NMCAA is a step above in creating classrooms that are well organized and effective in nurturing children’s growth.

Further information on school readiness goals for all program options can be found at nmcaa.net. The results of the most recent reviews by the Secretary and Financial Audit can be found at nmcaa.net

NMCAA CLASS Compared to National Average



Classroom Assessment Scoring System (CLASS) is a tool used in Head Start classrooms to assess the quality of interactions between teachers and students. NMCAA regularly surpasses national average scores in each of the CLASS dimensions.

Instructional Support assesses the ways in which teachers implement the curriculum to effectively promote cognitive and language development.

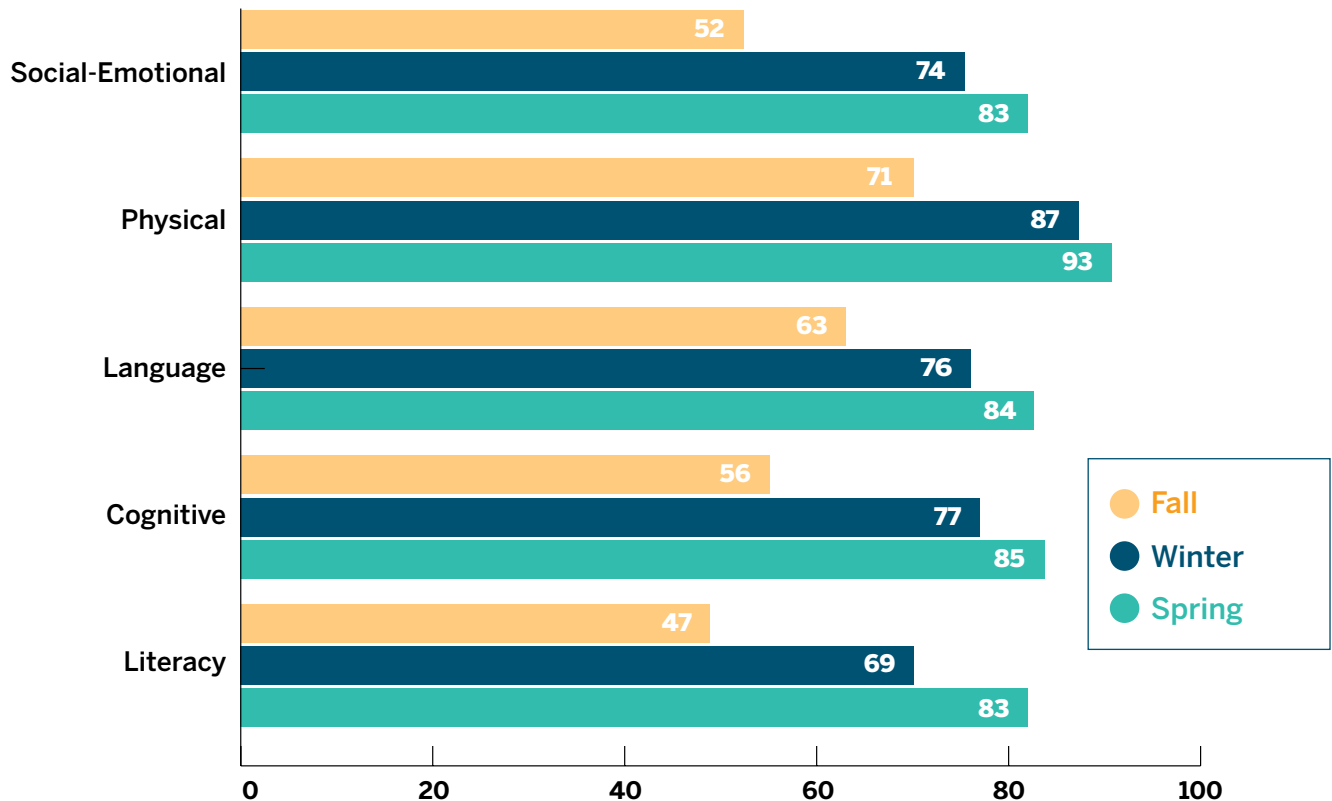
Classroom Organization assesses classroom routines and procedures related to the organization and management of children’s behavior, time, and attention in the classroom.

Emotional Support assesses the degree to which teachers establish and promote a positive climate in their classroom through their everyday interactions.

* National CLASS scores are reflective of the most recent data set available (2020). NMCAA scores are reflective of spring 2021.

Head Start Assessment Scores

Fall 2021 – Spring 2022



Funding

Total Amount of Public and Private Funds Received

Head Start

Revenue Fiscal Year 2022	Cash	Non-Cash
Department of Health and Human Services – Federal Cash	\$7,151,710	
USDA – Federal Cash	\$322,777	
Other Local Government Funding Agreement with Local School Districts to operate 4 year old programs (GSRP)	\$727,431	
Other Funding: MSU; Fundraising	\$7,170	
Other Funding	\$610	
Non-Federal Share		\$1,188,733
Total	\$8,209,698	\$1,188,733

Early Head Start

Revenue Fiscal Year 2022	Cash	Non-Cash
Department of Health and Human Services – Federal Cash	\$4,521,461	
USDA – Federal Cash	\$11,432	
Other Income	\$63	
Non-Federal Share		\$750,790
Total	\$4,532,956	\$750,790

Budget Expenditures and Proposed Budget for Fiscal Year 2022

Head Start

Fiscal Year 2022	Budget	Actual
Personnel	\$3,839,196	\$3,529,760
Fringe Benefits	\$787,628	\$626,247
Travel	\$750	\$161
Equipment	0	0
Supplies	\$215,378	\$351,587
Contractual	\$1,014,106	\$1,352,287
Other	\$667,805	\$1,088,737
Total Direct Charges	\$6,524,863	6,948,779
Indirect Charges	\$626,847	\$627,776
Total	\$7,151,710	\$7,576,555
USDA Reimbursement; EBT; Misc		– \$323,387
TOTAL		\$7,253,168

Early Head Start

Fiscal Year 2022	Budget	Actual
Personnel	\$2,244,235	\$2,205,484
Fringe Benefits	\$455,118	\$400,476
Travel	\$518	\$260
Equipment	0	0
Supplies	\$183,552	\$188,828
Contractual	\$697,154	\$638,959
Other	\$548,489	\$612,116
Total Direct Charges	\$4,129,066	\$4,046,123
Indirect Charges	\$392,395	\$385,375
Total	\$4,521,461	\$4,431,497
USDA Reimbursement; EBT		– \$11,495
TOTAL		\$4,420,003

Head Start/Early Head Start combined total budget was \$11,673,171, combined actual spending was \$11,673,171 resulting in \$0 net remaining.

Additional Funding Received

CRRSA	Budget 4/1/21-3/31/23	Actual Expenditure
Personnel	\$111,000	\$189,882
Fringe Benefits	\$27,000	\$33,229
Travel		\$1,776
Supplies	\$52,000	\$18,974
Contractual	\$20,000	0
Other	\$61,145	\$ 27,282
Total Direct Charges	\$271,145	\$271,143
Indirect Charges	\$27,115	\$27,117
Total	\$298,260	\$298,260

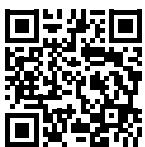
ARP	Budget 4/1/21-3/31/23	Actual Expenditure
Personnel	\$698,159	\$613,990
Fringe Benefits	\$168,052	\$93,905
Equipment	\$97,782	\$66,667
Supplies	\$122,934	\$81,122
Contractual		\$69,254
Other		\$165,770
Total Direct Charges	\$1,086,827	\$1,090,708
Indirect Charges	\$98,904	\$102,048
Total	\$1,185,732	\$1,192,756
USDA Reimbursement		– \$7,024
TOTAL		\$1,185,732



I learned lots of fun, creative ways to help my child's development. I now feel more capable of understanding my child's development.



I have grown as a parent so much because of this program. All of my children will go to the program.



For more information on our Early Childhood programs, and child development resources visit our website at nmcaa.net.



Helping People.
Changing Lives.



Northwest Michigan Community Action Agency
3963 Three Mile Road | Traverse City, MI 49686
231.947.3780 | 800.632.7334 | nmcaa.net